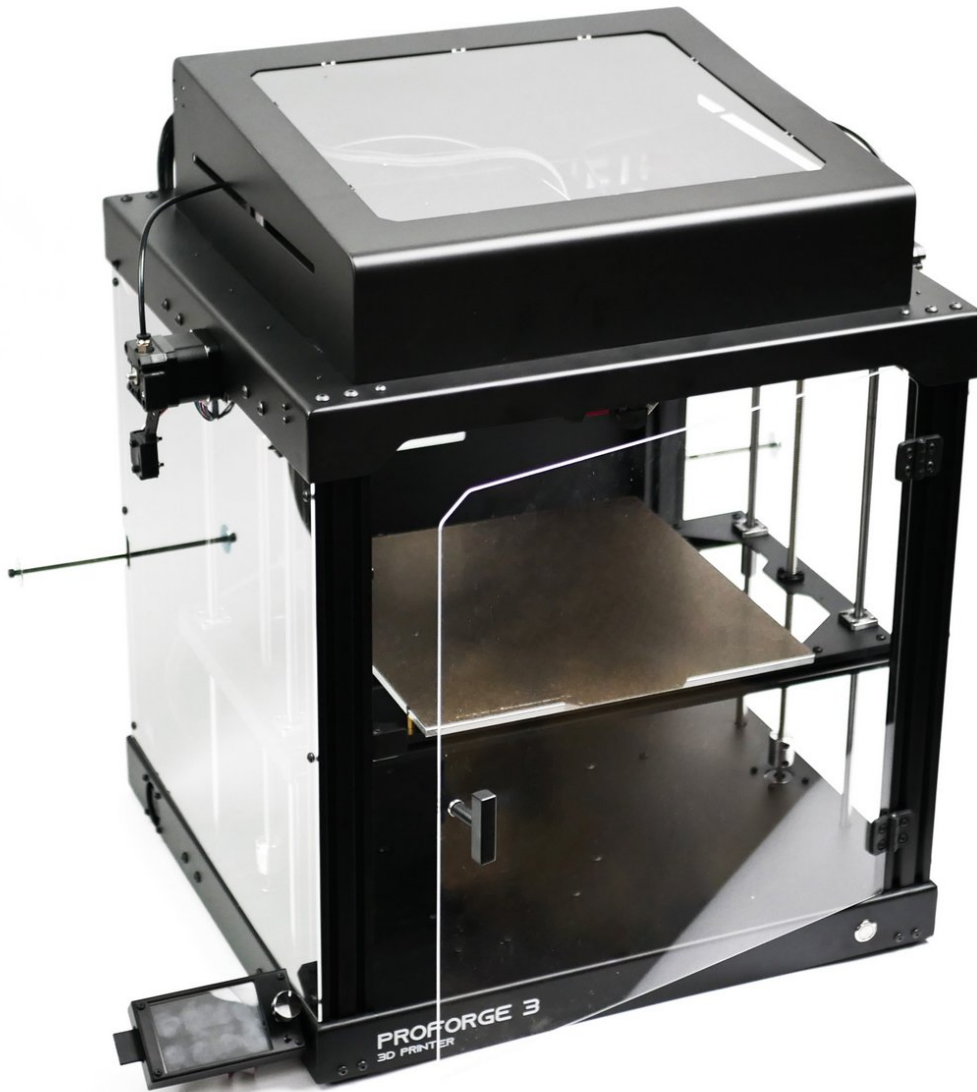


Makertech

Enclosure Install

Written By: Makertech 3D



Step 1 — Fastener Oversights



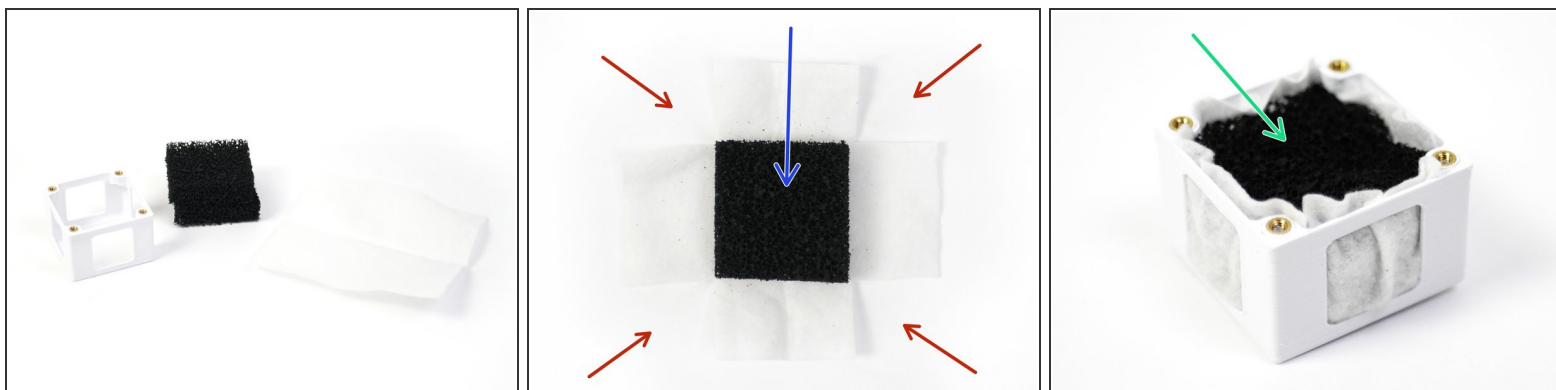
⚠ Unfortunately, some mistakes were made with the fasteners that were included with some of the enclosure upgrades that were shipped as part of the kickstarter batch.

i You may be missing:

- M4 x 25mm bolt (x4)
- M4 x 10mm Counter Sunk Bolt (x1)

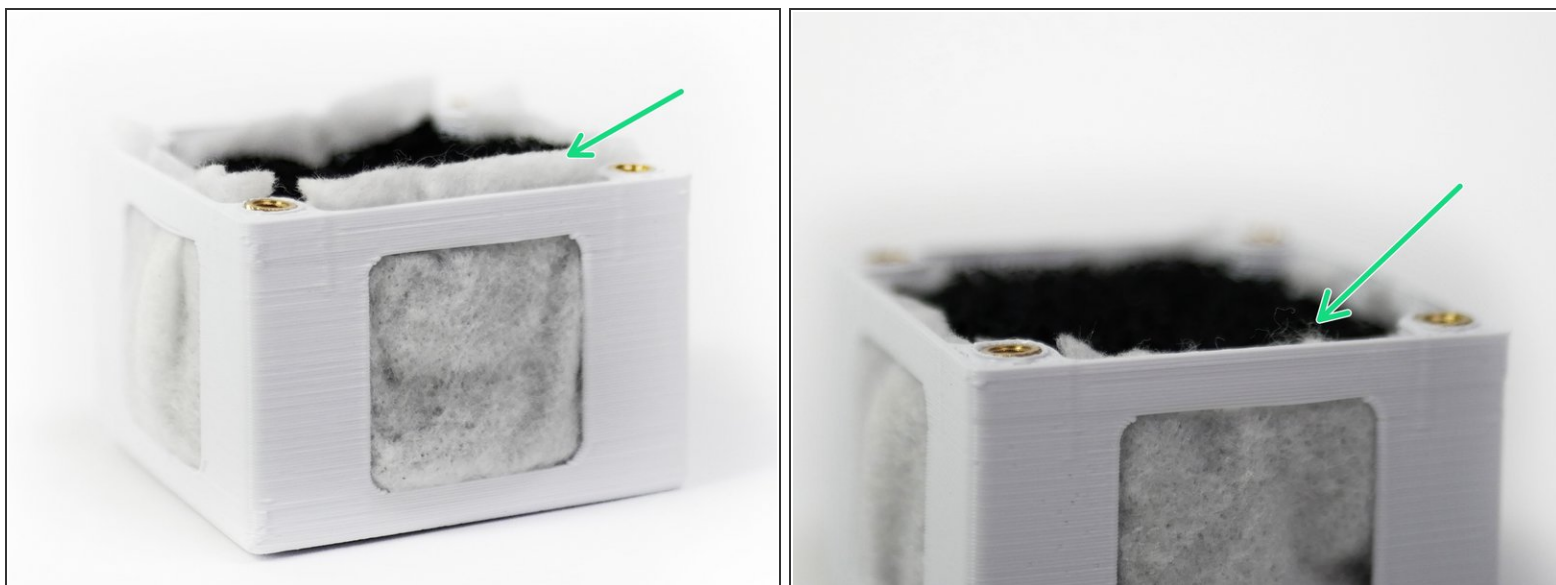
📌 Please complete this form [here](#), and we'll have these sent out, alternatively you can source locally for a quicker solution.

Step 2 — Fume Filter



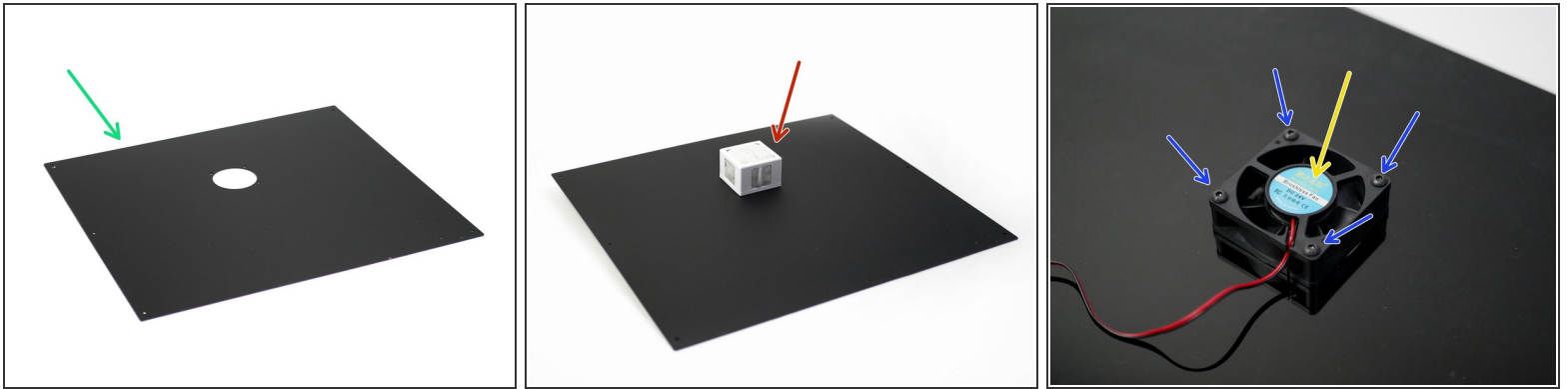
- i** Find the filter case, carbon filters and HEPA cloth.
- Place a carbon filter onto the centre of the HEPA cloth.
 - Cut the 4 squares from the corners as shown.
 - Push the carbon and HEPA filters into the filter case as shown.

Step 3 — Trimming the Excess HEPA Cloth



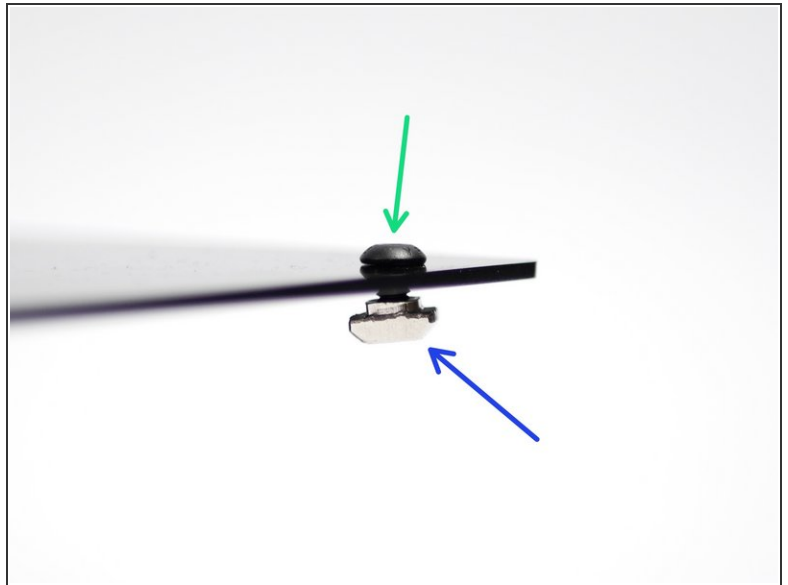
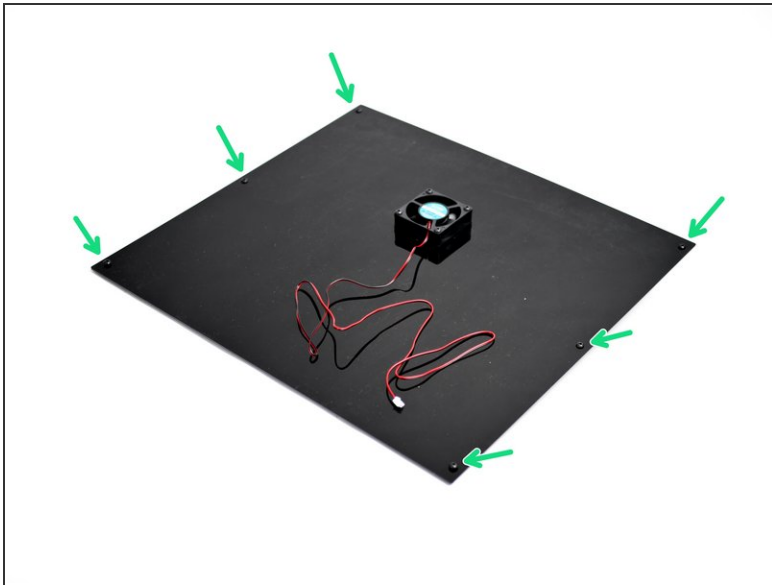
- Trim away the excess HEPA cloth.


Step 4 — Filter to Back Panel






- Remove the backing paper from the back panel.
- Fix the fume filter assembly to the back panel, with the 60mm fan on the other side.
 - M4 x 25mm Bolt
- Make sure that the fan is fixed sticker side up.

Step 5 — Bolts to Back Panel

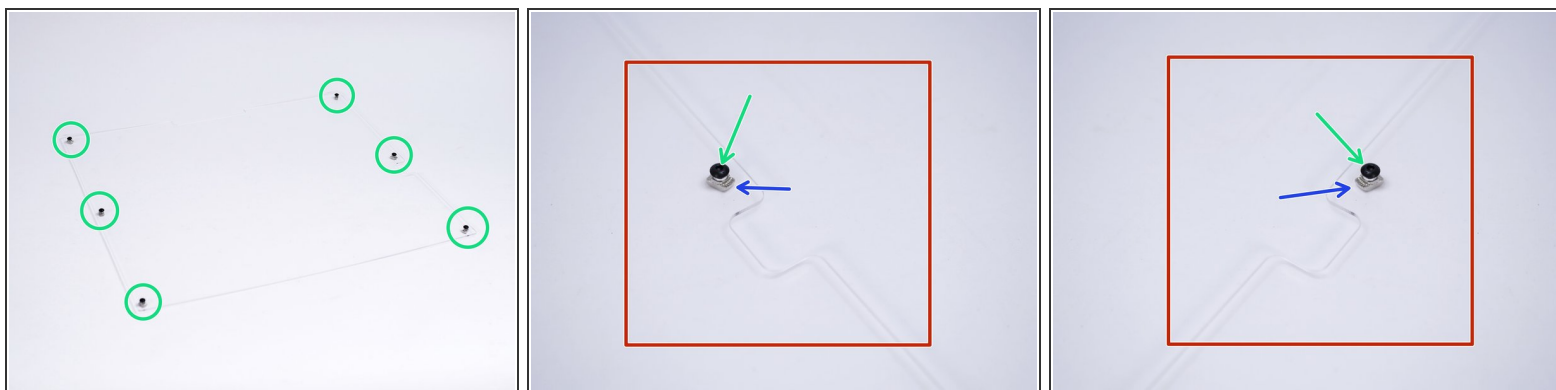


 Losely fasten on:

-  M4 x 6mm Bolts
-  M4 T-Nuts

 Make sure that the bolts are on the fan side.

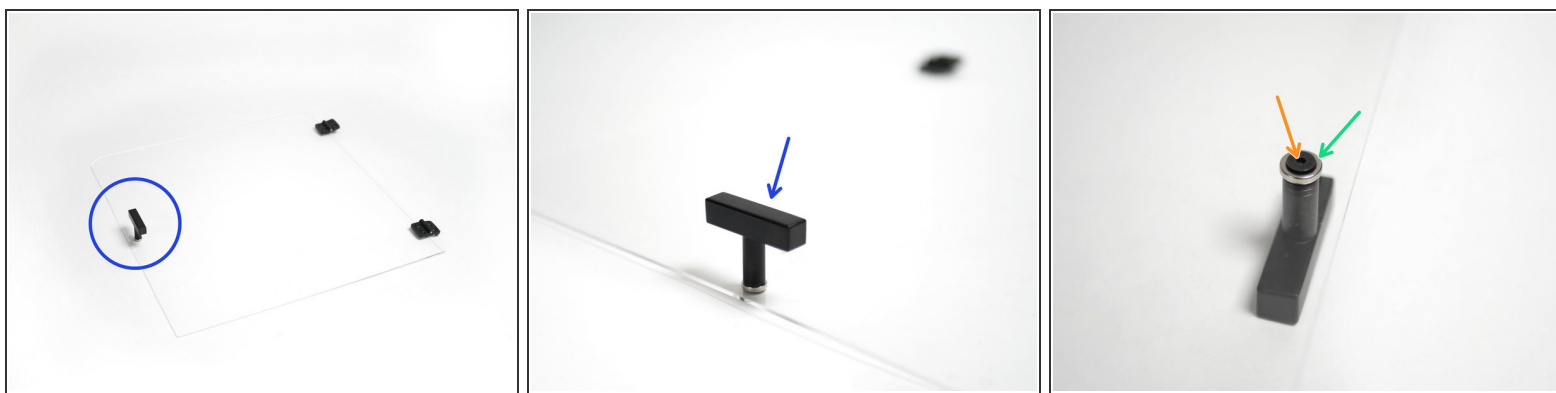
Step 6 — Side Panel Prep.



i Begin by peeling away the protective covering from both sides of the side panels.

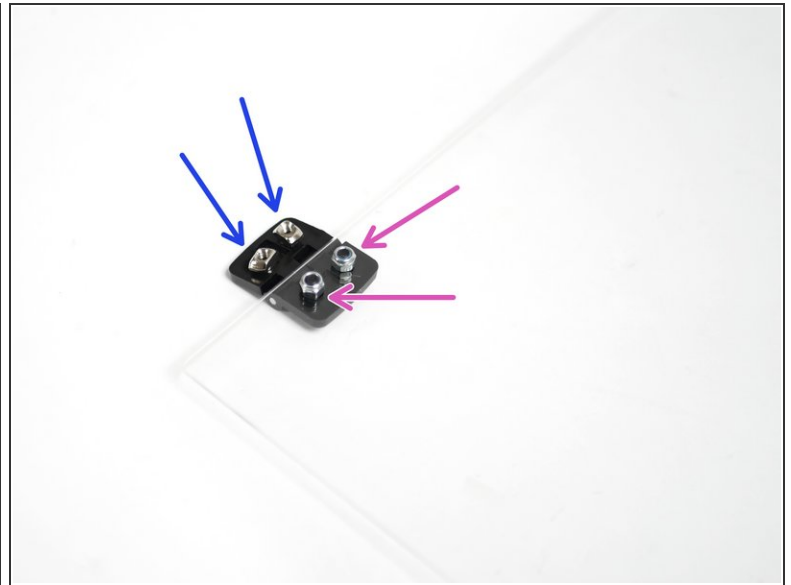
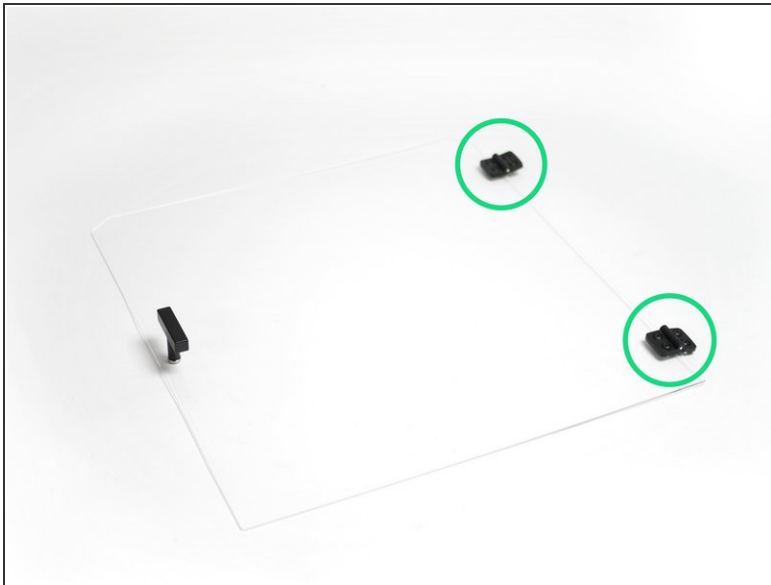
- As with the back panels, loosely fasten:
 - M4 x 6mm Bolt
 - M4 T-Nut
- Create mirrored assemblies of the two side panels.

Step 7 — Front Panel Prep. - Handle



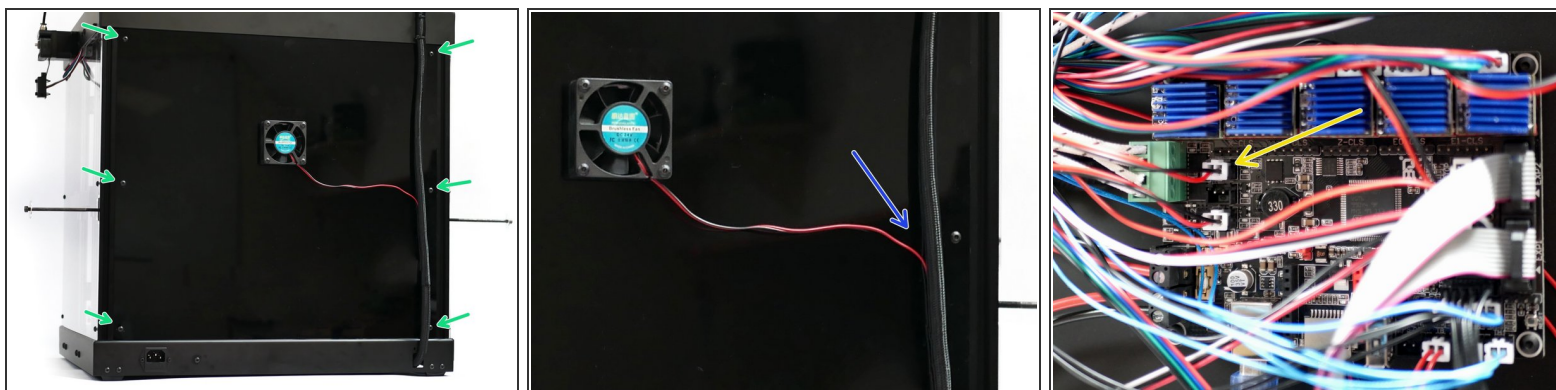
- Fix the handle onto the front panel.
 - M4 x 10mm Counter Sunk Bolt
 - M4 Button Magnet

Step 8 — Front Panel Prep. - Hinges



- Fix the hinges as shown to the front panel.
 - M4 x 6mm
 - M4 T-Nut
 - M4 x 10mm
 - M4 Nyloc Nut

Step 9 — Back Panel Install



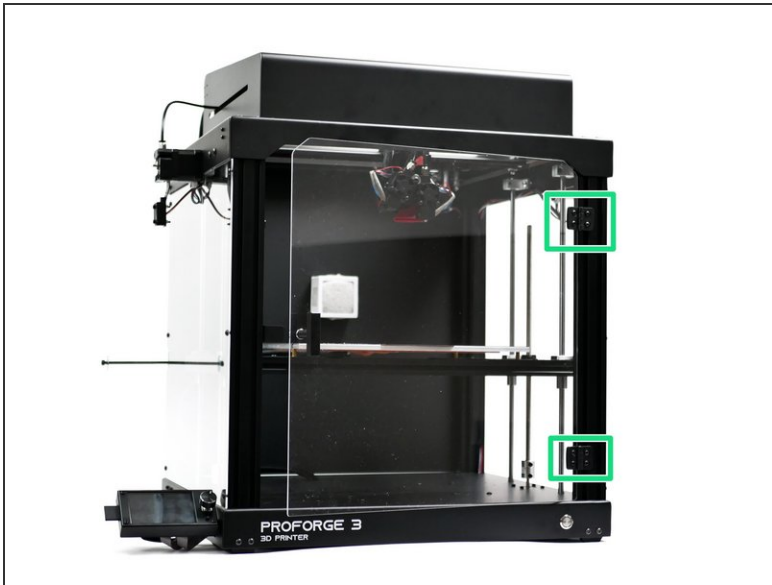
- Fix the Back Panel to the rear of the printer, with the fan on the outside.
- Feed the cable through the wiring loom and into the base.
- Connect the fan to the control board as shown.

Step 10 — Side Panels Install



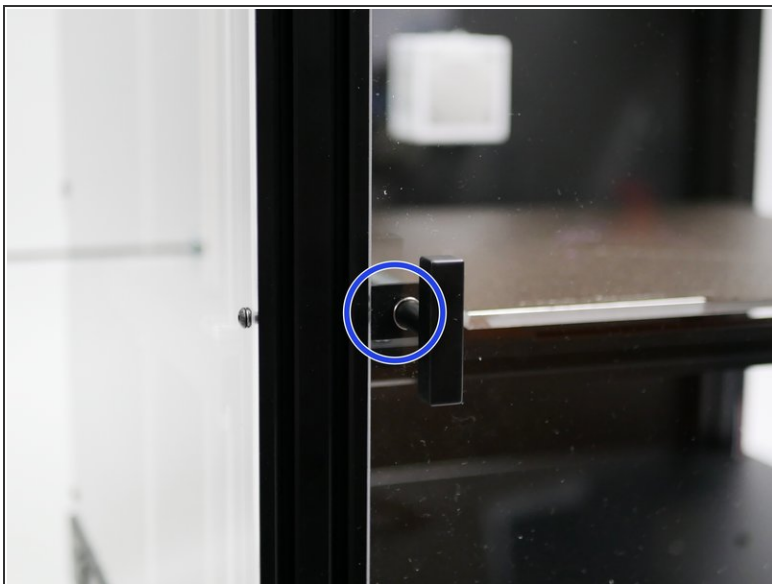
- Mount the side panels to the side of the printer.
- Orientate so that the spool holder cut out points to the rear of the machine.

Step 11 — Front Panel Install



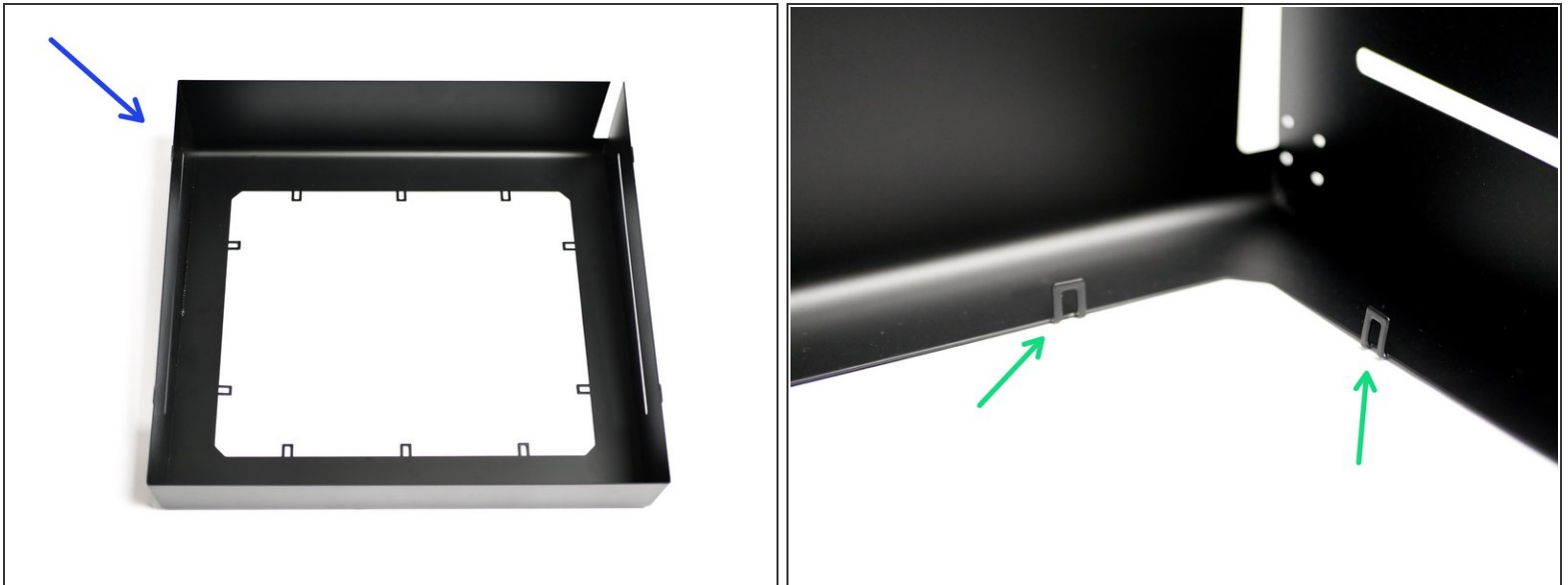
- Fix the door hinges to the front of the printer.

Step 12 — Magnetic Latch



- Prepare the enclosure latch with an M4x6mm bolt and M4 T-nut.
- Align the enclosure latch with the magnet on the door handle and fix it in place on the inside of the frame.

Step 13 — Roof Prep



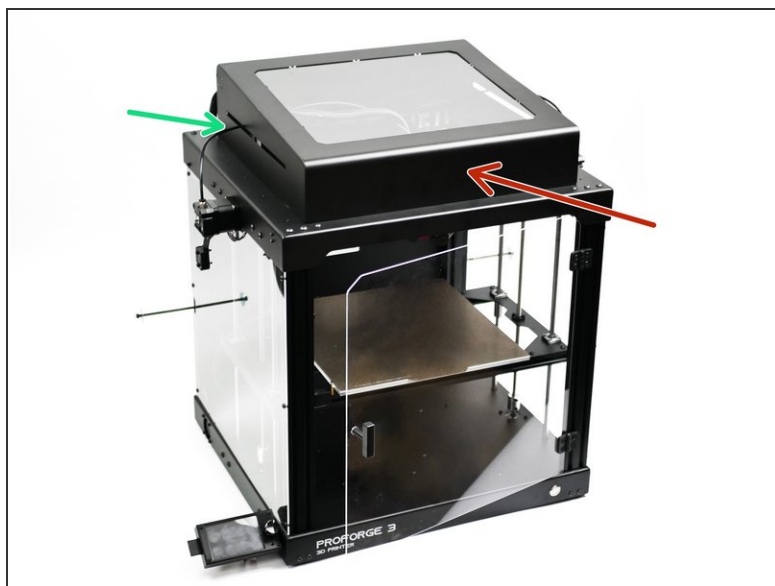
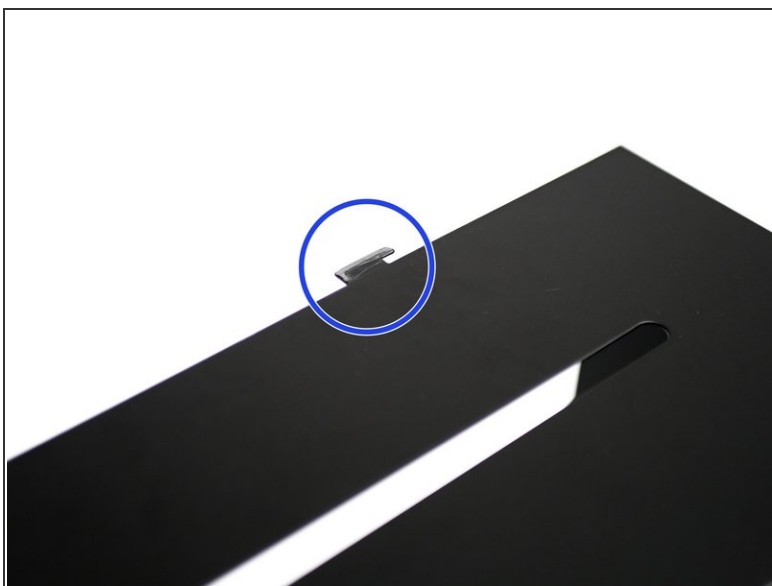
- Take the roof and lay it down as shown.
- Bend all of the tabs up.

Step 14 — Roof Panel



- Peel the protective sheet from both sides of the roof panel.
- Drop it onto the raised tabs.
- Bend the tabs back down as shown to secure the panel.

Step 15 — Securing the Roof



- Due to the paint that was applied on both the roof and top panel, the tabs may need filing down to get a proper fit.
- Drop the roof into the slots on the top panel, push back to secure.
 - Before fixing the roof, the PTFE tubes need to be fed through the slots on the side as shown.

Step 16 — Using the Fume Fan



- ① Include *M106 P2* to your start Gcode to activate the fan.
- ① Include *M107 P2* to your end Gcode to turn off the fan.