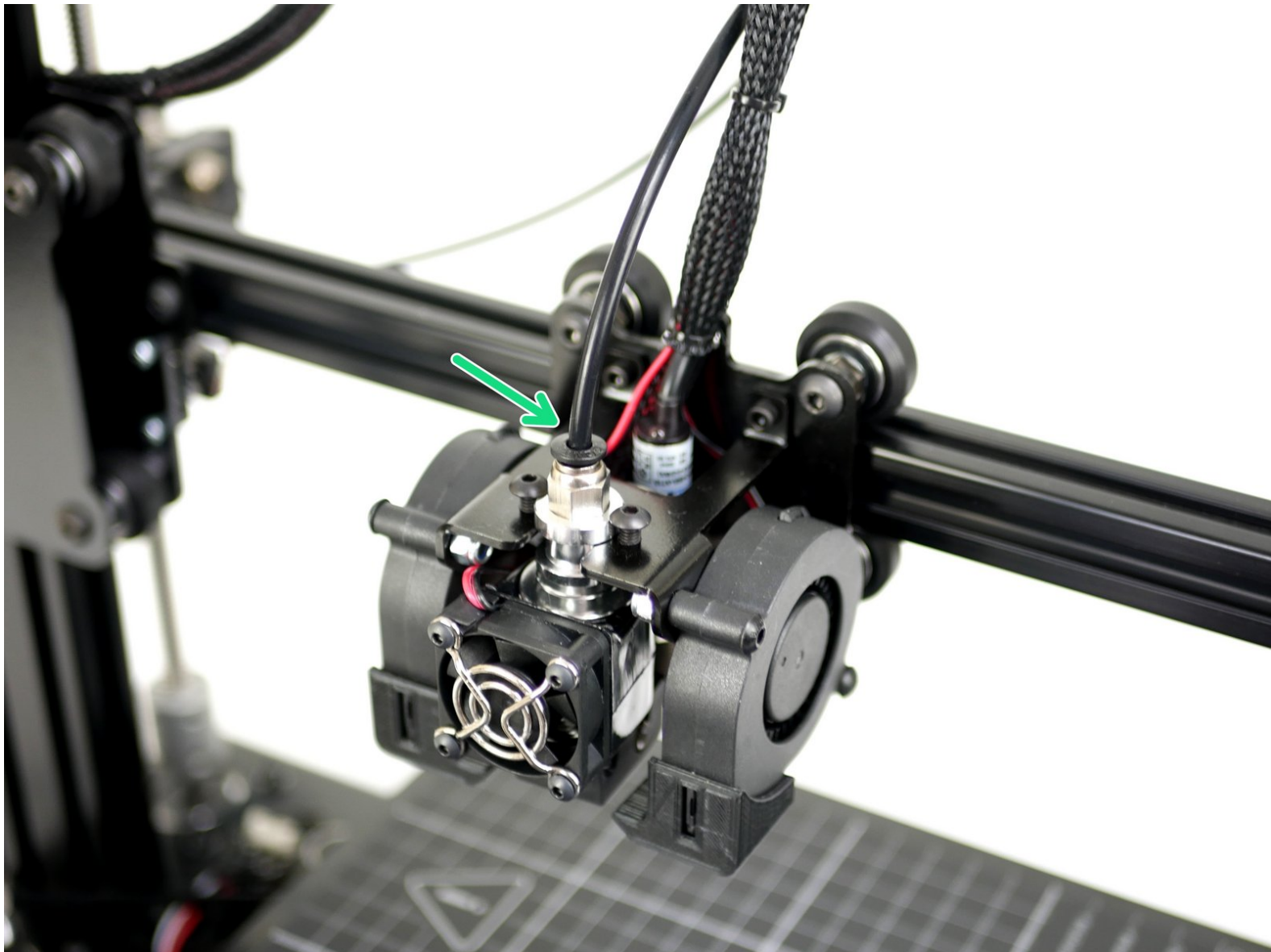


Makertech

DSE Stage 02 - Disassembling the Single Hotend

Written By: Makertech



Step 1 — Before Starting



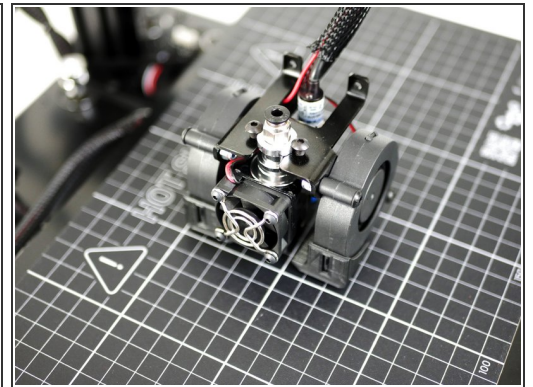
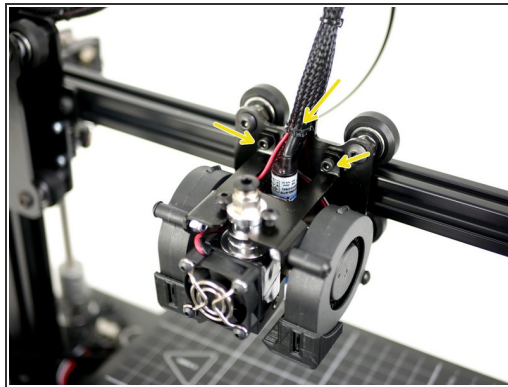
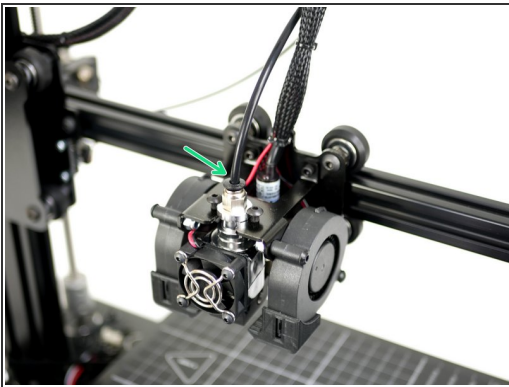
i Complete this stage:

- If you are upgrading from an already built Proforge 2/2S Single Extruder setup.

i Skip this stage and continue [here](#):

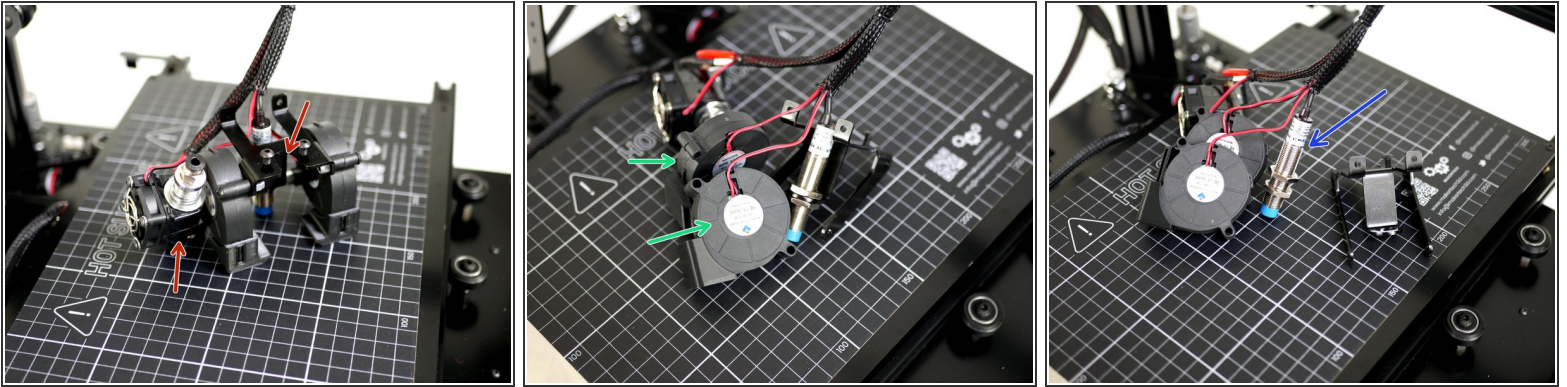
- If you are building the Dual Switching Extruder from the Proforge 2/2S build guides

Step 2 — Dismounting the Single Hotend



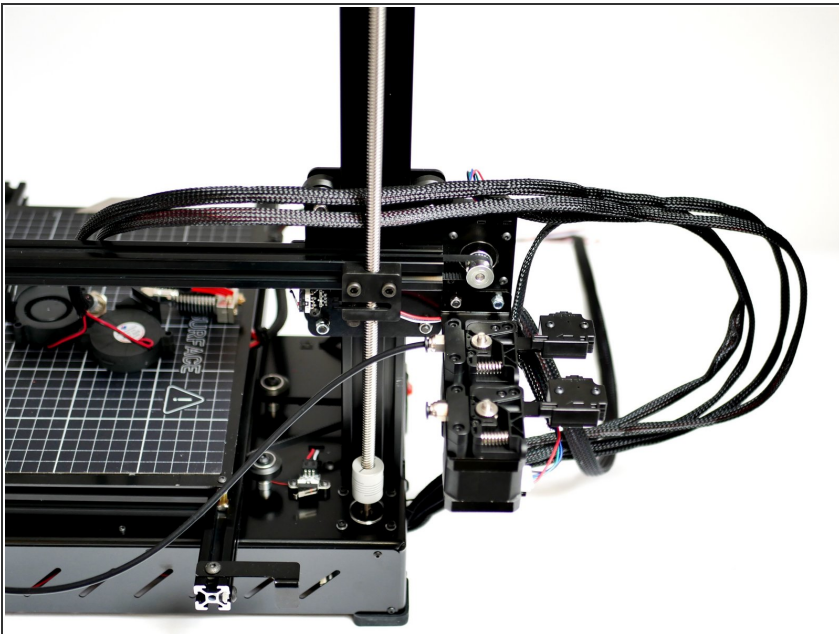
- Remove the PTFE Tubing from the Hotend and Extruder.
- Cut the cable tie holding the cables to the carriage and remove the two M3 x 8mm bolts.

Step 3 — Disassembling the Single Hotend



- Remove from the Hotend from the mount.
- Remove the fans from the mount.
- Remove the probe from the mount.

Step 4 — Removing the Cable Ties



- ❗ Remove all of the cable ties from the main branch of cables going down to the base.