

Makertech

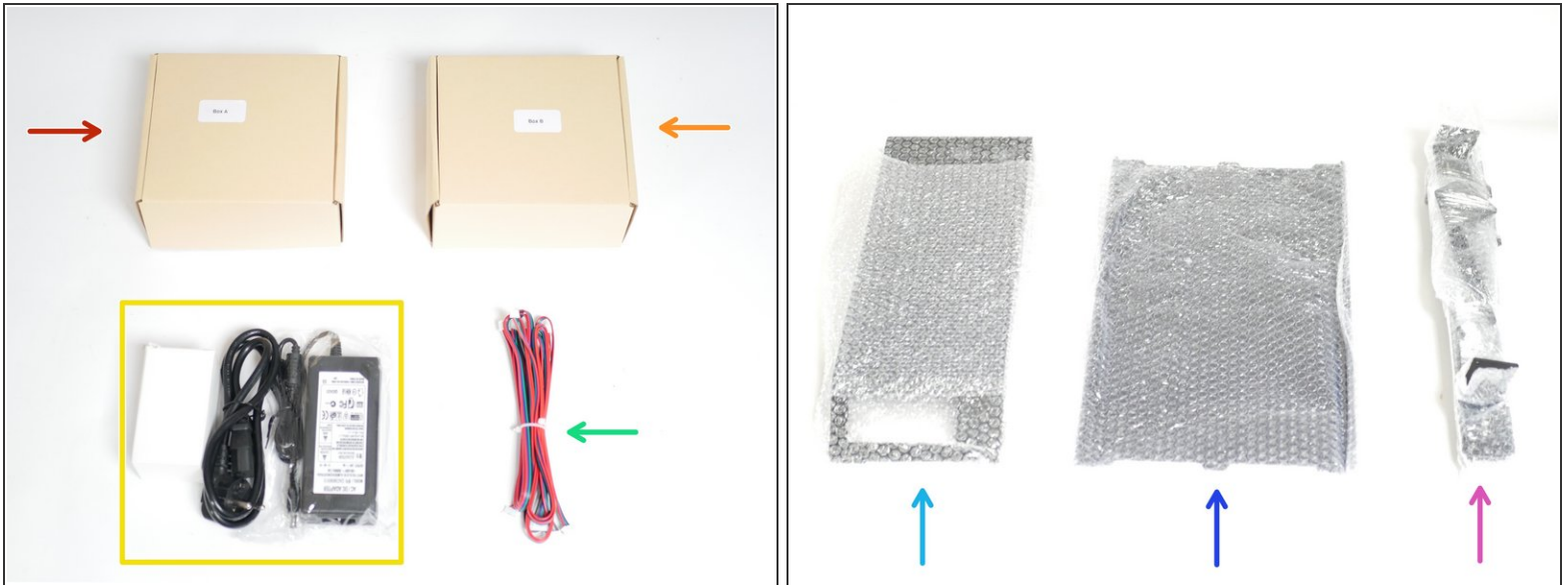
Stage 00: Unboxing


Unboxing and going over all of the included parts.

Written By: Makertech



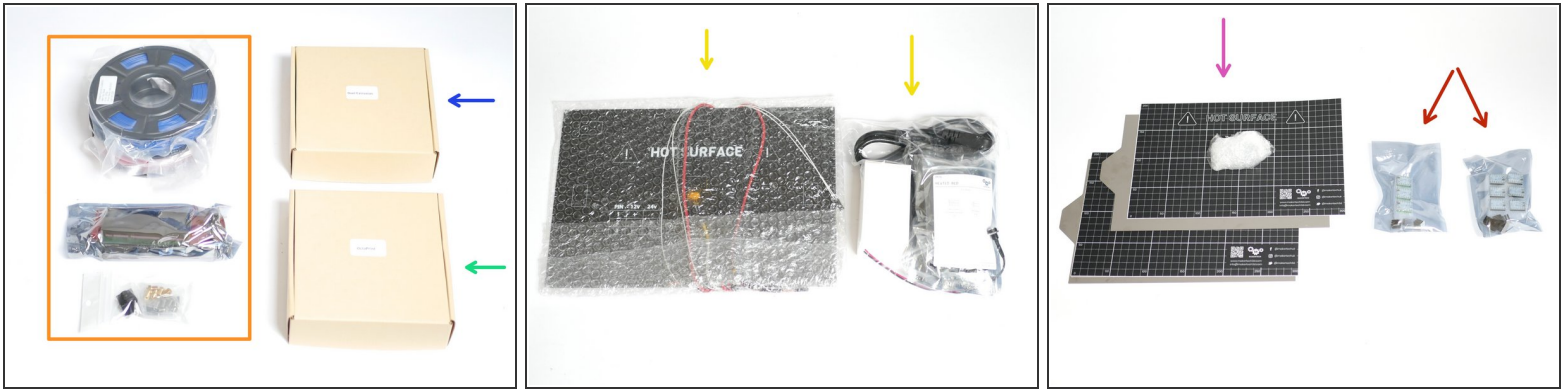
Step 1 — Unboxing - Axis Base



 The base model Axis 3D printer comes with:

- Box A - Electronics
- Box B - Mechanics
- Power Supply, Cable and Adapter
- Motor Cables (in Box A for some)
- Base
- Platform
- Wrapping - Metal parts and lead screw

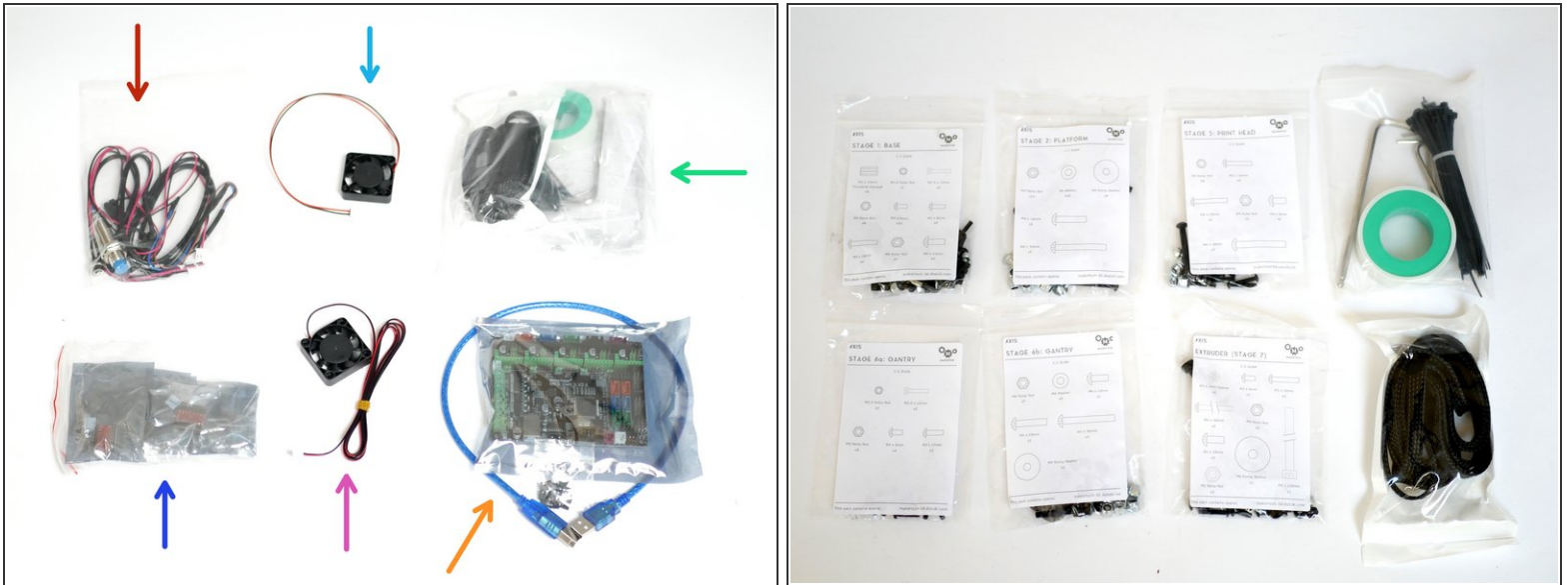
Step 2 — Upgrades



i Depending on which upgrades you have added:

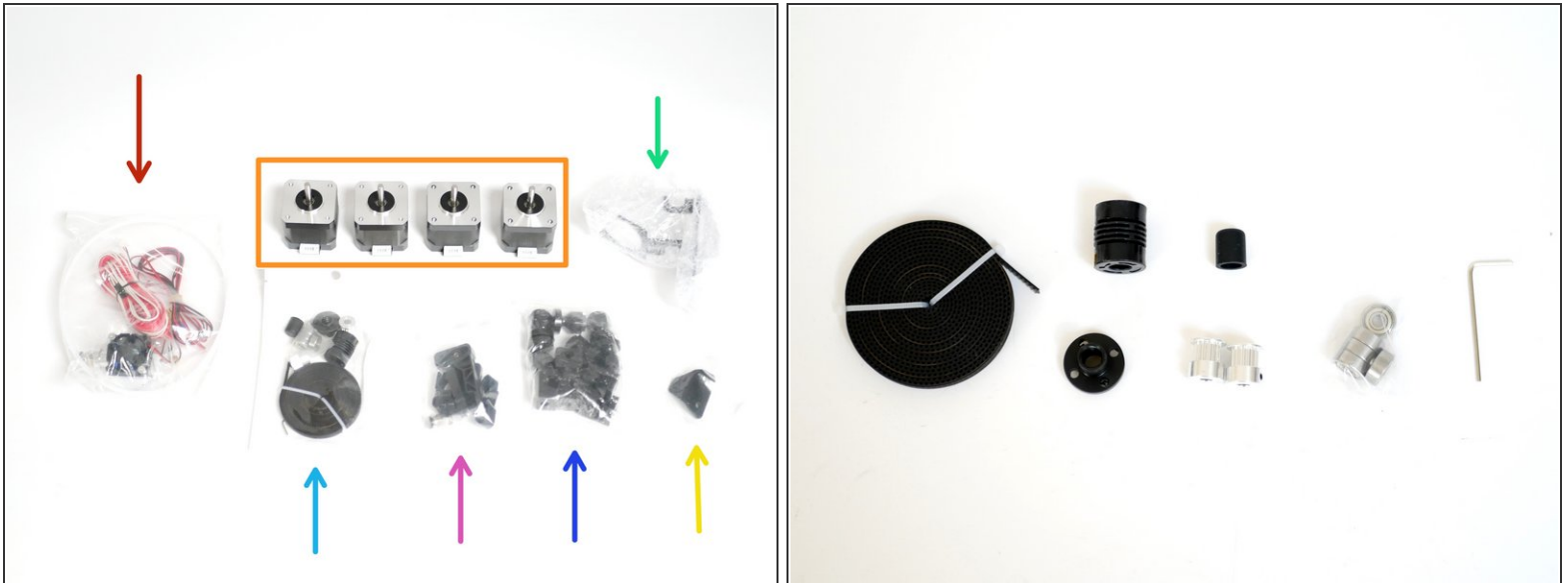
- Power Pack
- Dual Extrusion
- OctoPrint
- Heated Bed
- Flexplate (Single or Double) with Magnet Set (x9 magnets)
- TMC2208 Drivers (3 or 6pcs)

Step 3 — Box A - Electronics



- **Cables:** Probe, 15CM End-stop, 80CM End-stop, 30CM Power Port
- 40mm Fan - 20CM cable
- **Fasteners and fixings:** Cable sleeving, cable ties, allen keys, PTFE tape, Stage 1,2,5,6a, 6b and 7 fastener packs.
- A4988 Stepper Drivers (x5)
- 40mm Fan - 1M cable
- MKS Gen_L V2 Control Board, USB cable and 15 Jumpers.
- ☑ **Motor Cables**

Step 4 — Box B - Mechanics



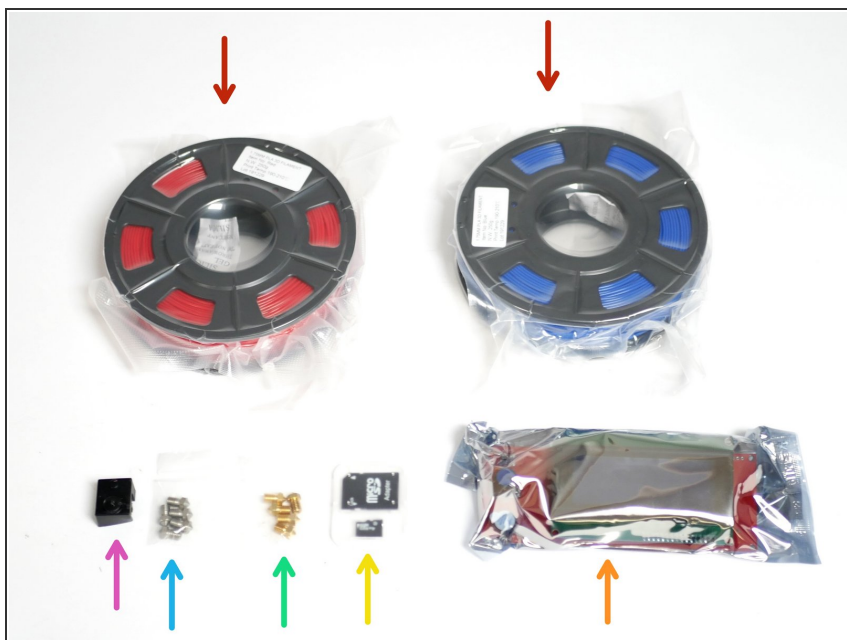
- Hotend Kit
- NEMA 17 Motors (x4)
- Tool Carriage
- Timing Belt Kit: GT2 Belt, 5x8 Coupling, Pulley (x2), 624ZZ Bearings (x5), Lead Screw Nut, Lead Screw End Cap and Allen Key.
- Extruder Kit
- Linear Guides
- Lead Screw Bracket

Step 5 — Wrapping - Metal Parts & Lead Screw



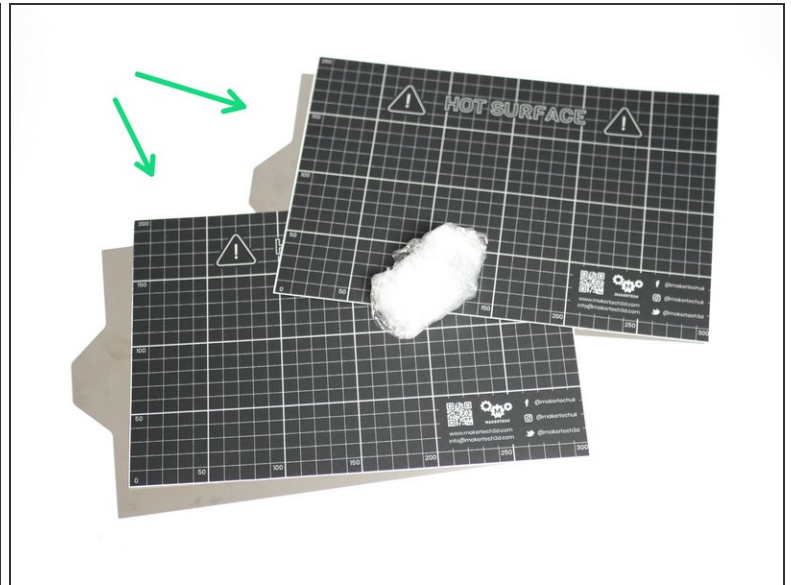
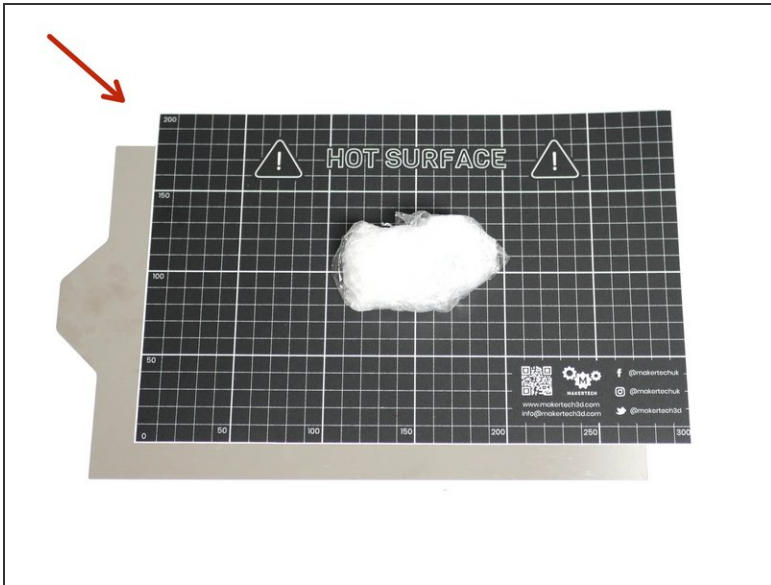
- Z-Pillar A
- Z-Pillar B
- Gantry
- Lead Screw - 265mm
- Spool Holder

Step 6 — Power Pack



- Filament (x2)
- LCD Screen
- SD Card
- Brass Nozzles
- Steel Nozzles
- Silicone Hotend Sock

Step 7 — Flexplate (Single or Double)



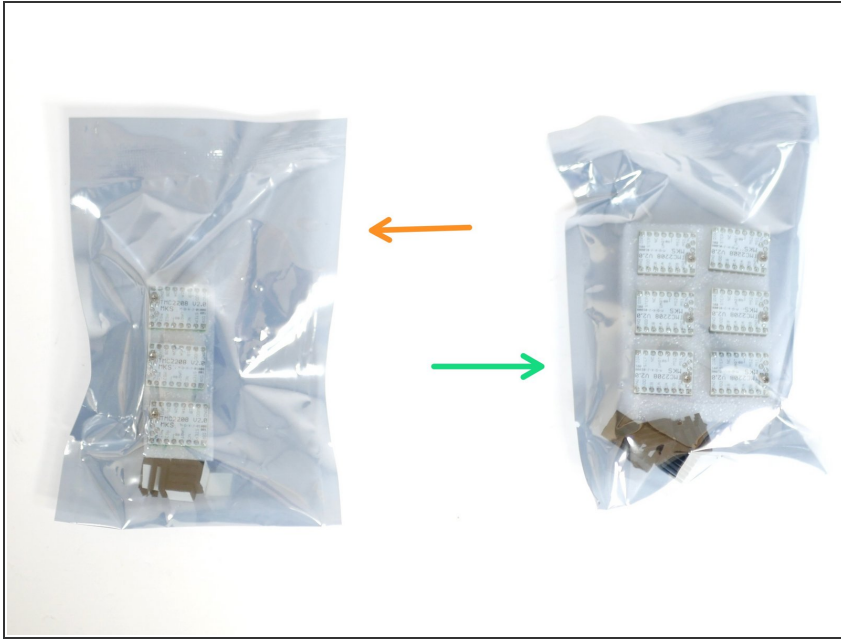
- Flexplate - Single
- Flexplate - Double

Step 8 — Heated Bed



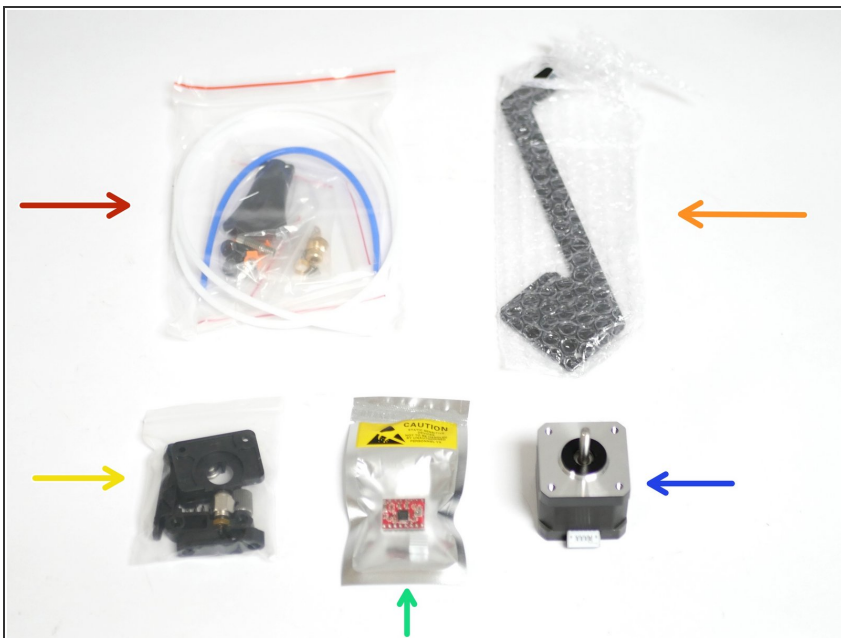
- Heated Bed
- Power Supply, Cable and Adpater
- MOSFET
- Fasteners
- Power Port

Step 9 — TMC2208 Drivers (3 or 6pcs)



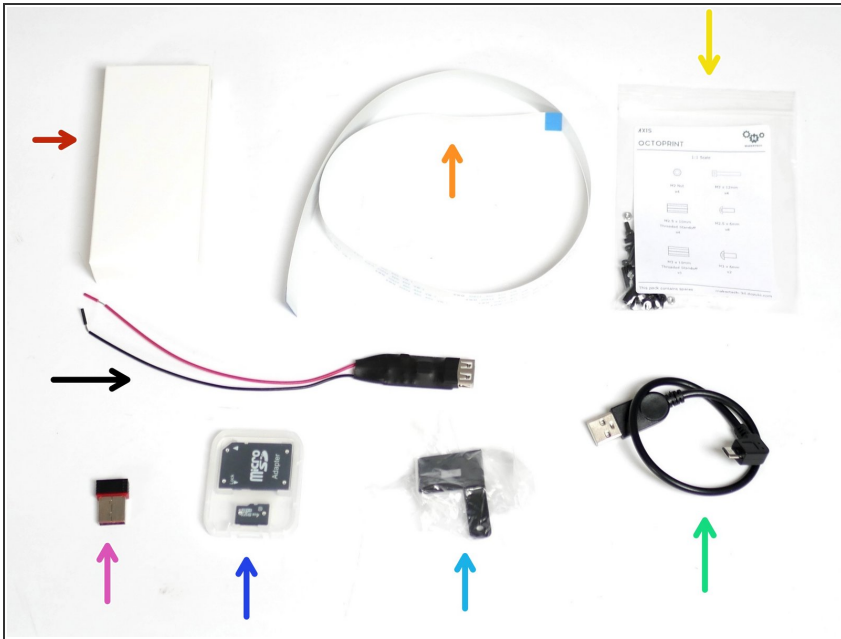
- TMC2208 Drivers (3pcs)
- TMC2208 Drivers (6pcs)

Step 10 — Dual Extrusion



- Splitter Kit
- Spool Holder
- Extruder Kit
- A4988 Driver
- NEMA 17 Motor

Step 11 — OctoPrint



- Pi Cam
- Ribbon Cable
- Fasteners
- USB Cable
- Pi Cam Mount
- SD Card (Class 10)
- Wi-Fi Adapter
- USB Power Converter