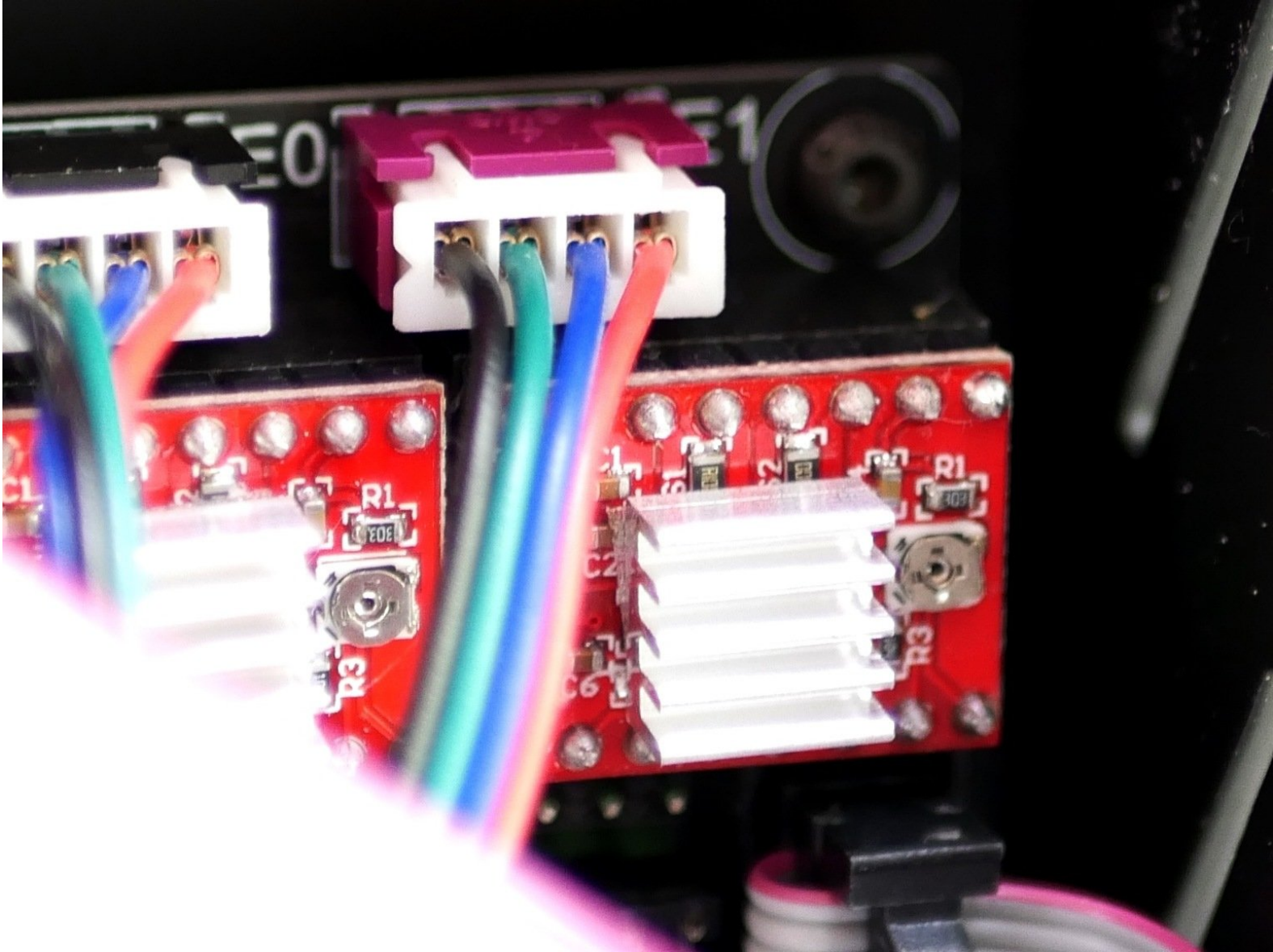


Makertech

Stage 01: Driver and Motor Cable

Written By: Makertech

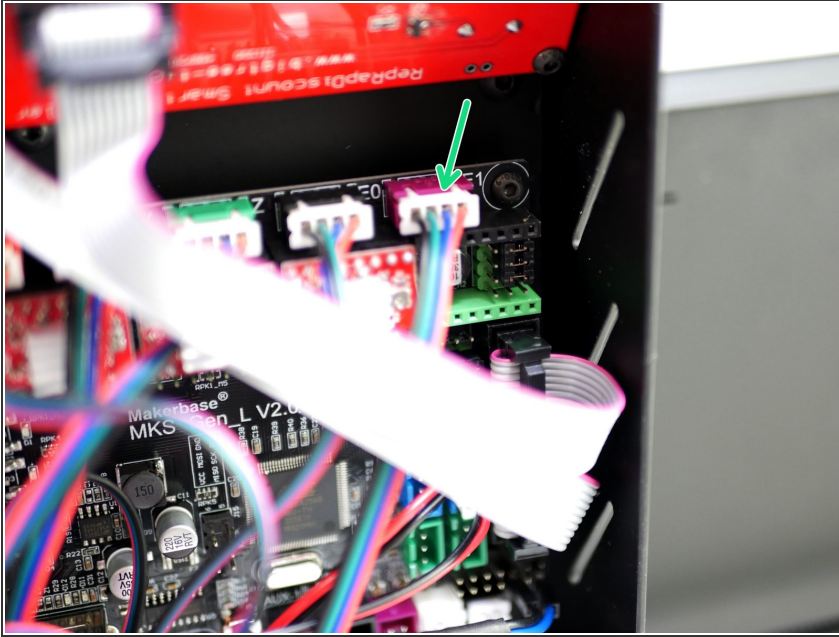




TOOLS:

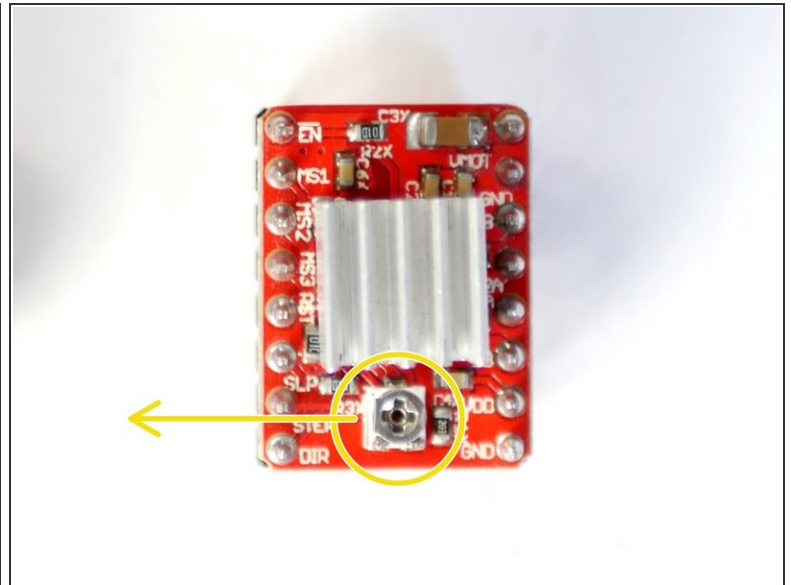
- [Small flat head screw driver](#) (1)
-

Step 1 — Extruder Motor Cable



- Plug the second extruder cable into position on the control board.
- ☑ This cable came with the Axis printer and should already have been installed during the main build.

Step 2 — A4988 Driver

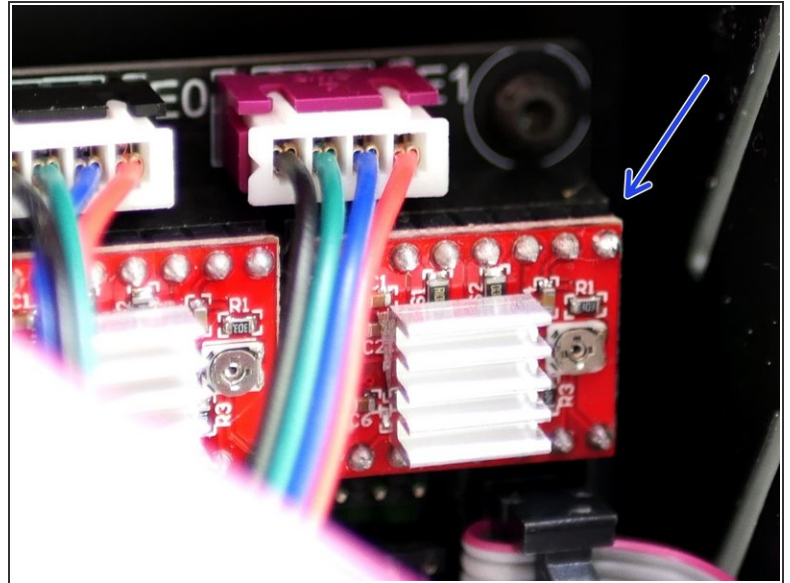
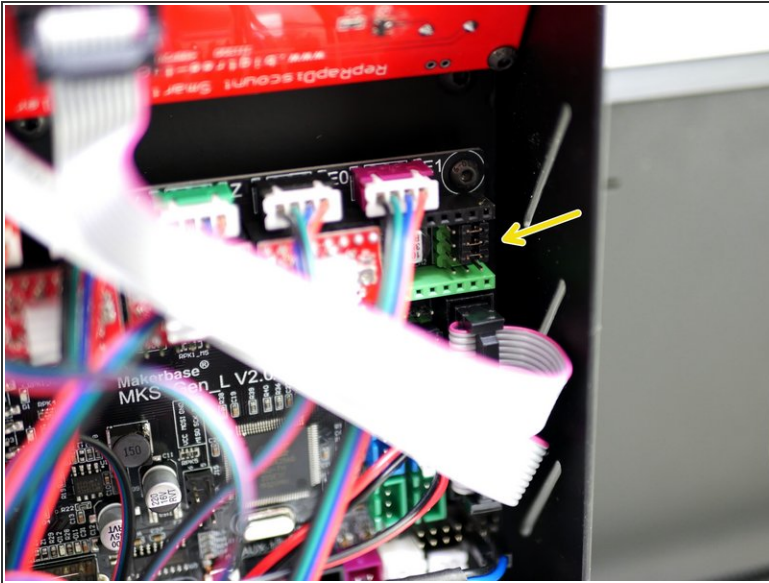


☛ If you have a TMC2208 Driver skip to step 4.

⚠ The stepper drivers are the most delicate part of the Axis 3d printer and it is why we've also included a spare. Before opening, make sure that you are grounded (touch a large metal object) to avoid any chance of static damage.

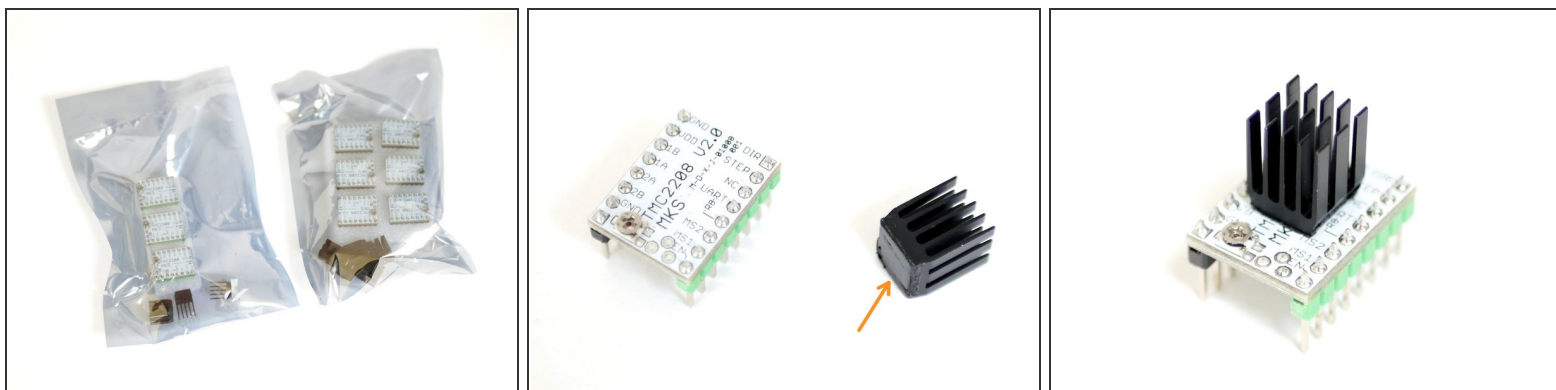
- Prepare the A4988 Stepper Driver by removing it from its packaging and sticking the heat-sink to the black chip.
- ☛ Make sure that the heat-sink is not touching any of the pins. Orient the fins of the heat-sink as shown.
- Adjust the trimpot so that flat side is pointing left as shown in the second photo.

Step 3 — Installing the A4988 Driver



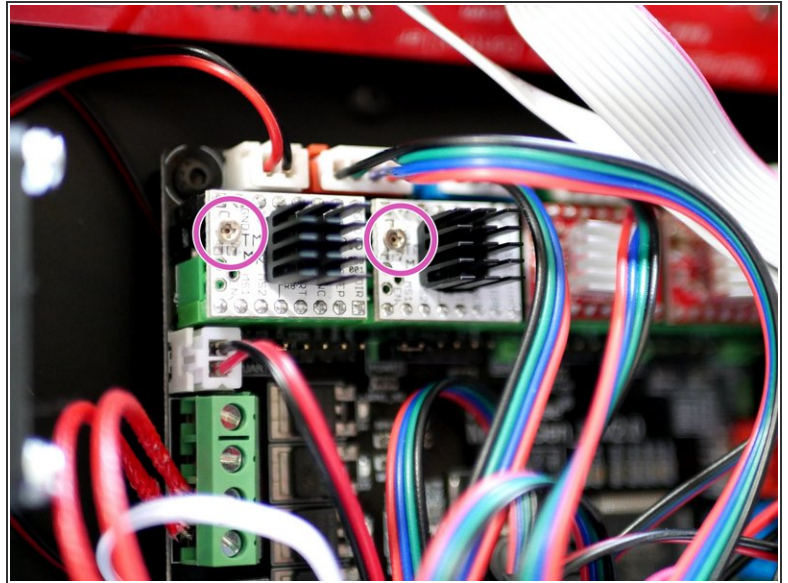
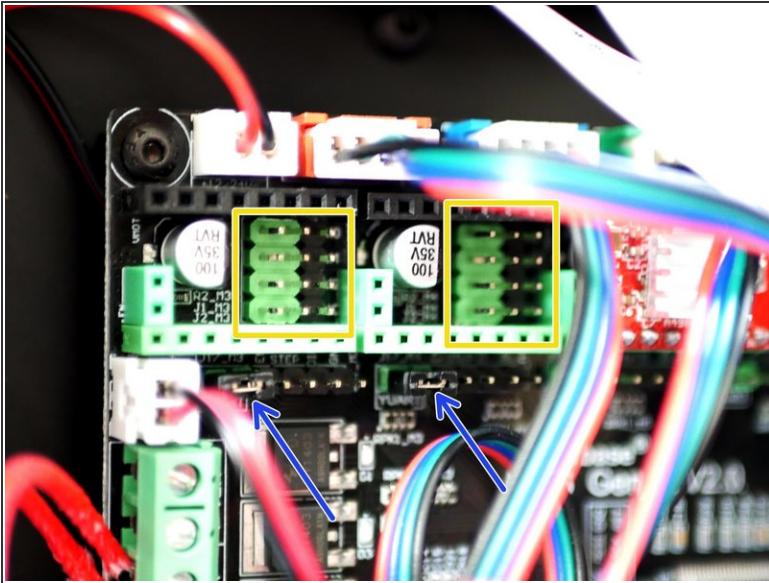
- Check also that you have three jumpers installed like shown.
 - Install the stepper driver onto the control board in the position shown.
- ⚠ Make sure that the driver is orientated with its trim-pot pointing away from the power terminals. Plugging it in the wrong way round will destroy it.

Step 4 — TMC2208 Driver



- ⚠** The stepper drivers are the most delicate part of the Axis 3d printer and it is why we've also included a spare. Before opening, make sure that you are grounded (touch a large metal object) to avoid any chance of static damage.
- i** The TMC2208 upgrade comes with either 3 or 6 drivers. If you have three you can use two on the x/y axes and keep one as spare, if you have 6 you can use them on the X/Y/Z/E1 (and E2 for dual extrusion) and have one spare.
- Prepare the TMC2208 stepper drivers by removing them from their packaging and sticking the heat-sink to the top.
 - ☑** Make sure that the heat-sink is not touching any of the pins. Orient the fins of the heat-sink as shown.

Step 5 — Installing the TMC2208 Drivers



- ☒ The photos shown these drivers being installed on the X/Y axes, the process for installing on the E2 position is identical.
- To install the TMC2208 drivers you will need to make sure that there are no jumpers plugged in at the stepper driver locations on the control board.
- You will however need to make sure that there is one jumper placed on the UART pins for each axis you have a TMC2208 installed.
- Plug the TMC2208 driver into the positions shown, make sure that the trim-pot is pointing towards the power terminals, installing the driver the wrong way round will destroy it.
- ☒ Note, the trim-pot doesn't need adjusting as these drivers allow us to control the current via the firmware.