

Makertech

Stage 02: Top

Written By: Makertech 3D

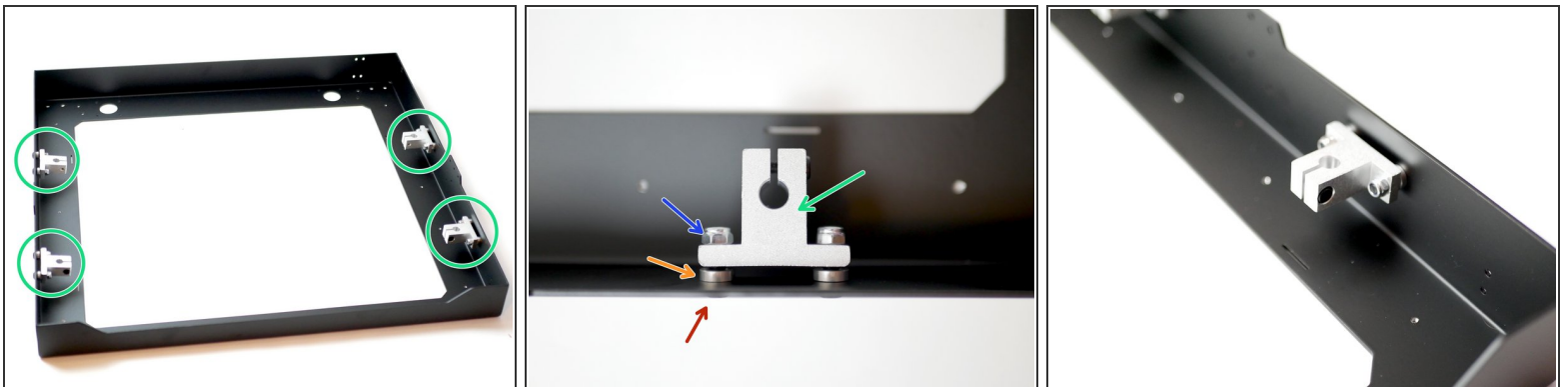


Step 1 — Proforge 3.5



⚠ If you are building a Proforge 3.5, skip this stage of the guide.

Step 2 — Z-Rod Brackets



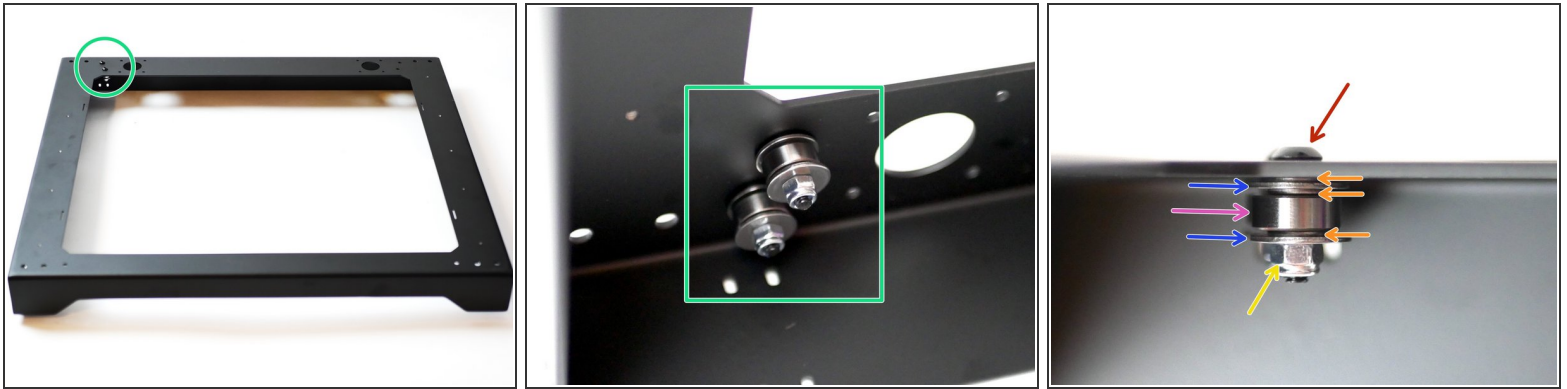
- Fix the four metal brackets to the sides of the top panel.

- Bracket
- M5 x 3mm Spacer
- M5 x 16mm Button
- M5 Nyloc Nut

⚠ Do not tighten yet, leave the bracket fixed loosely.

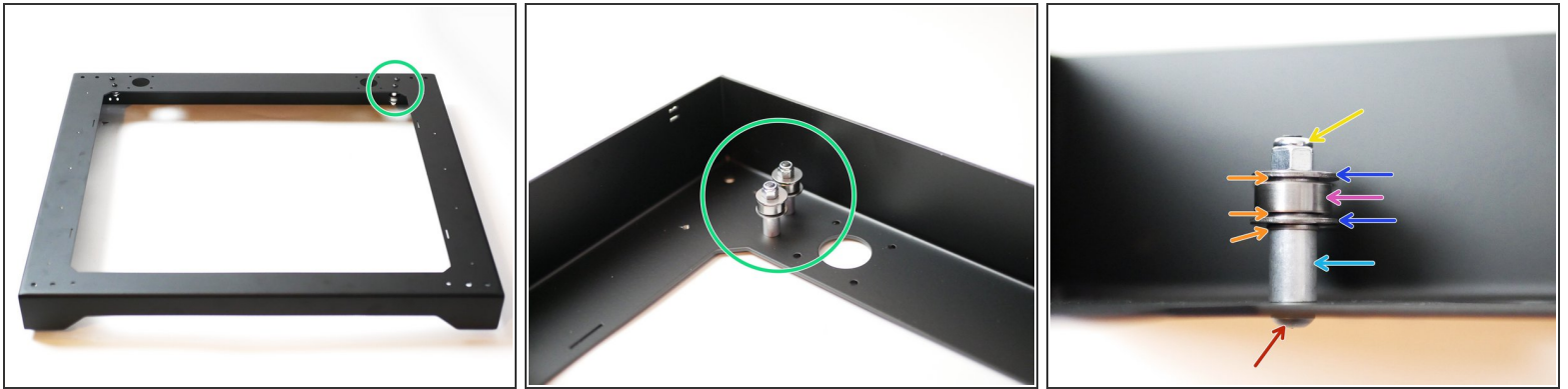
⚠ Make sure the bolt on the bracket is facing outwards and away from the centre of the base panel.

Step 3 — Rear Left Idlers



- Install the two idler assemblies onto the rear left of the top panel as shown.
 - M4 x 18mm Button
 - M4 Washer
 - M4 Penny Washer
 - 624zz Bearing
 - M4 Nyloc Nut

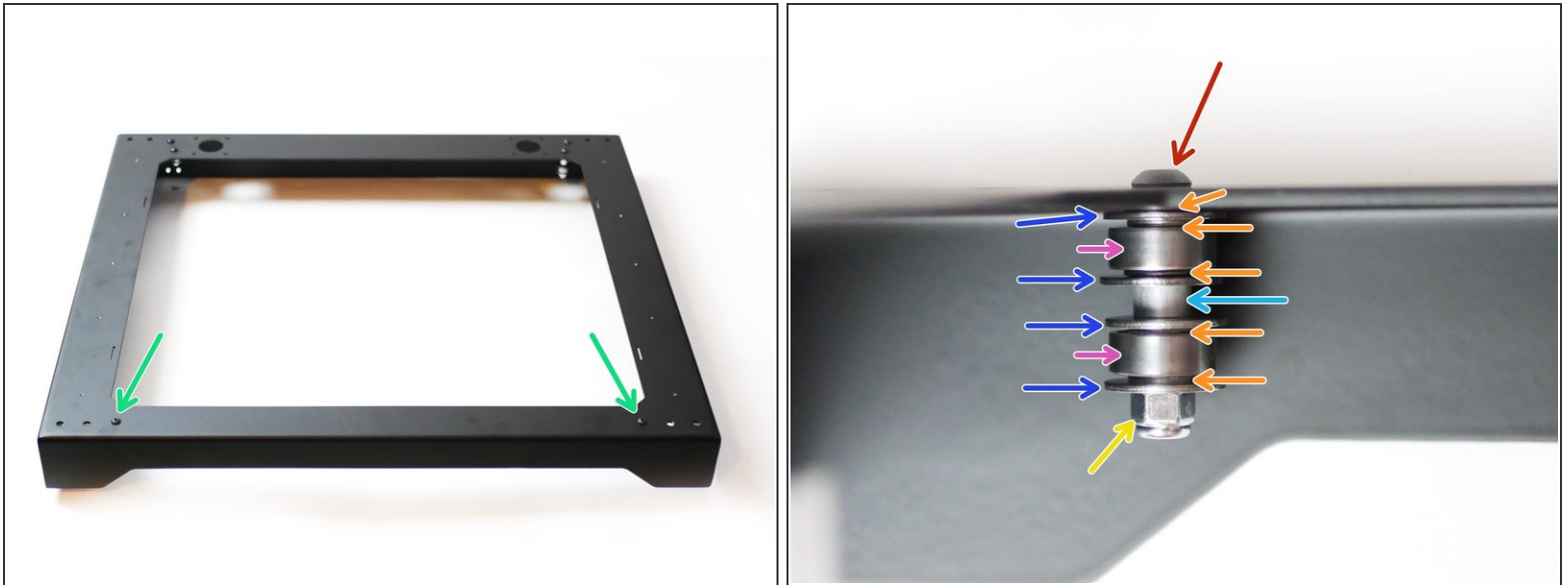
Step 4 — Rear Right Idlers



- Install the two idler assemblies onto the rear right of the top panel as shown.

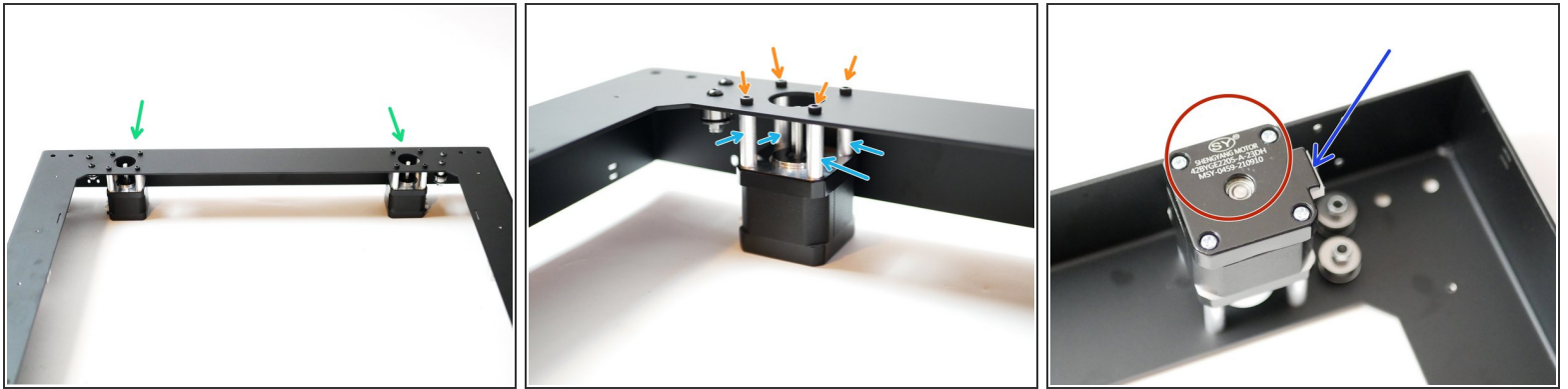
- M4 x 30mm Button
- M4 x 12mm Spacer
- M4 Washer
- M4 Penny Washer
- 624zz Bearing
- M4 Nyloc Nut

Step 5 — Front Idlers



- Install the two idler assemblies onto the front of the top panel as shown.
 - M4 x 30mm Button
 - M4 Washer
 - M4 Penny Washer
 - 624zz Bearing
 - M4 x 4mm Spacer
 - M4 nyloc Nut
- Note, it's a little hidden in the photo, but there is another M4 washer between the panel and the top penny washer.

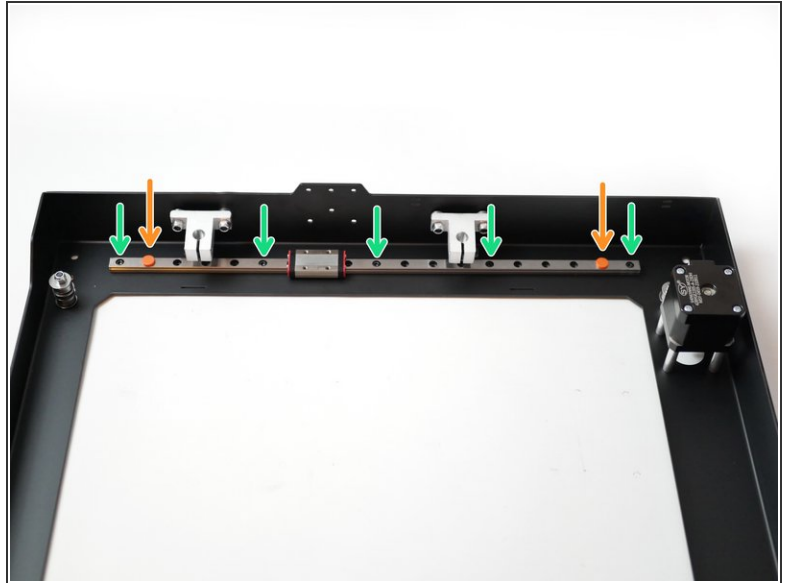
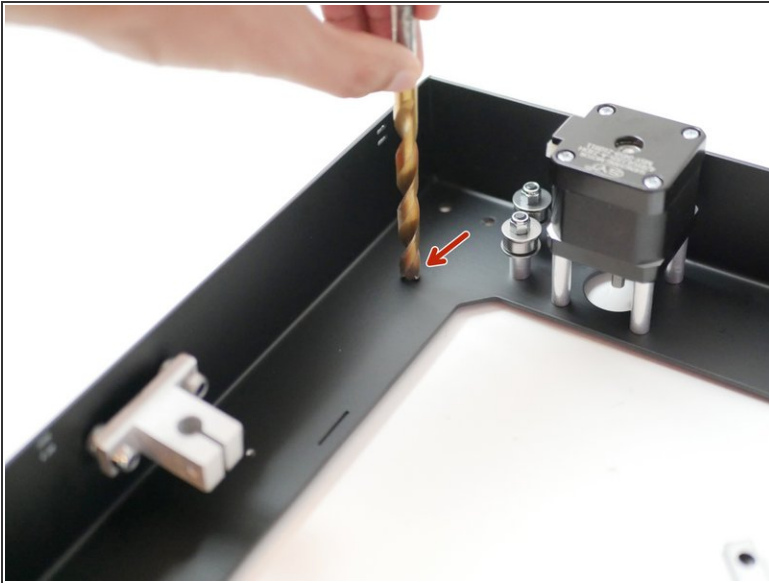
Step 6 — Motors



- Install the two 0.9 degree stepper motors to the rear of the top panel as shown.
 - M3 x 30mm Cap
 - M3 x 25mm spacer
- Orientate the motor so that the cable header is pointing towards the idler assemblies.

⚠ Double check it's the 0.9 degree motors that you are installing. **42BYGE2205**

Step 7 — Y-Rails



- Use an oversized drill bit to **carefully** clear any burr left over from the threading of the rail mounting holes.
- Remove a rail from its packaging and move the red carriage stoppers in one hole space.
- Secure the rail to the top panel as shown with five M3 x 6mm Cap bolts.
- ⓘ Repeat the process for the rail on the other side of the top panel also.

⚠ **Make sure that the carriage never falls off the rail.**