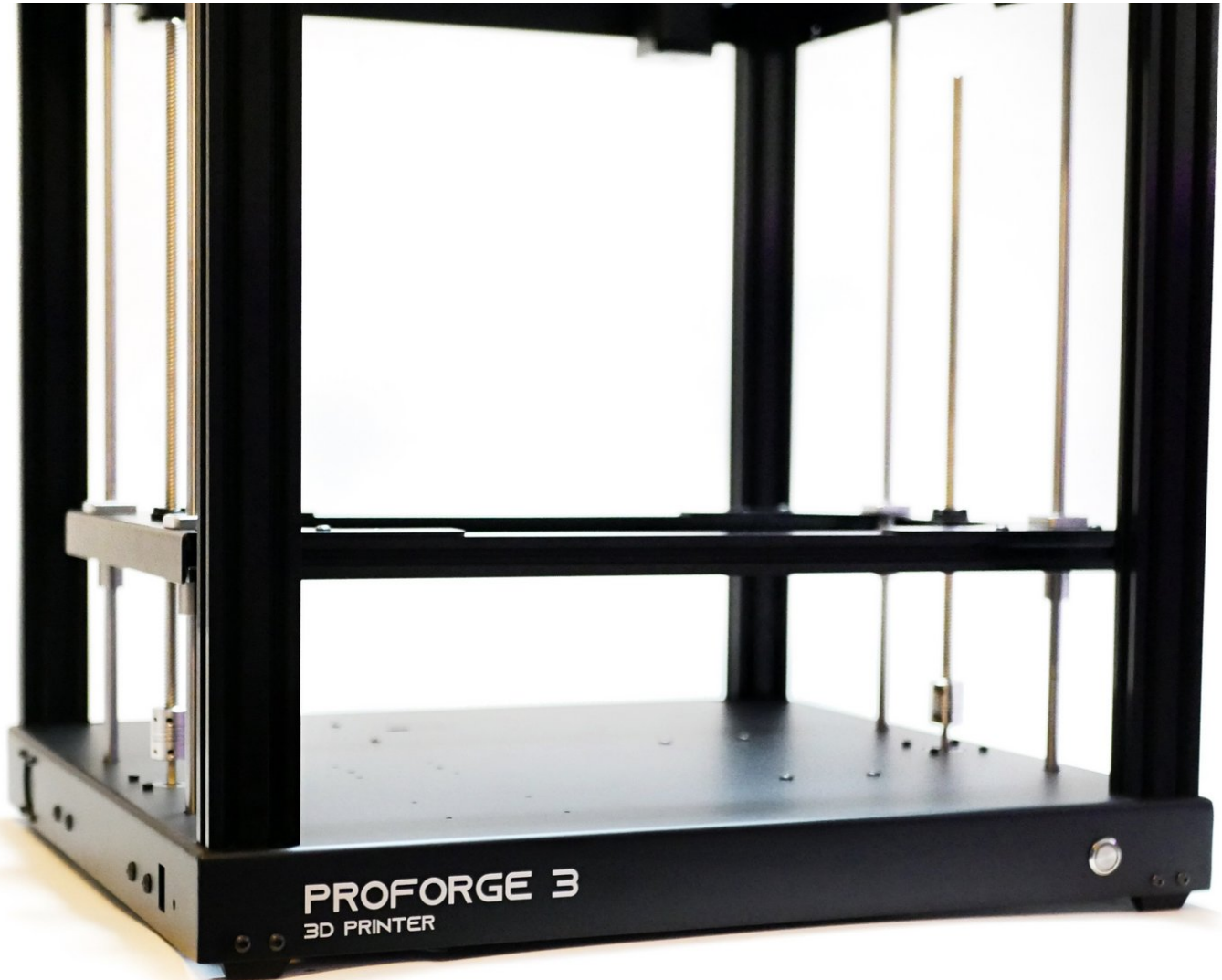


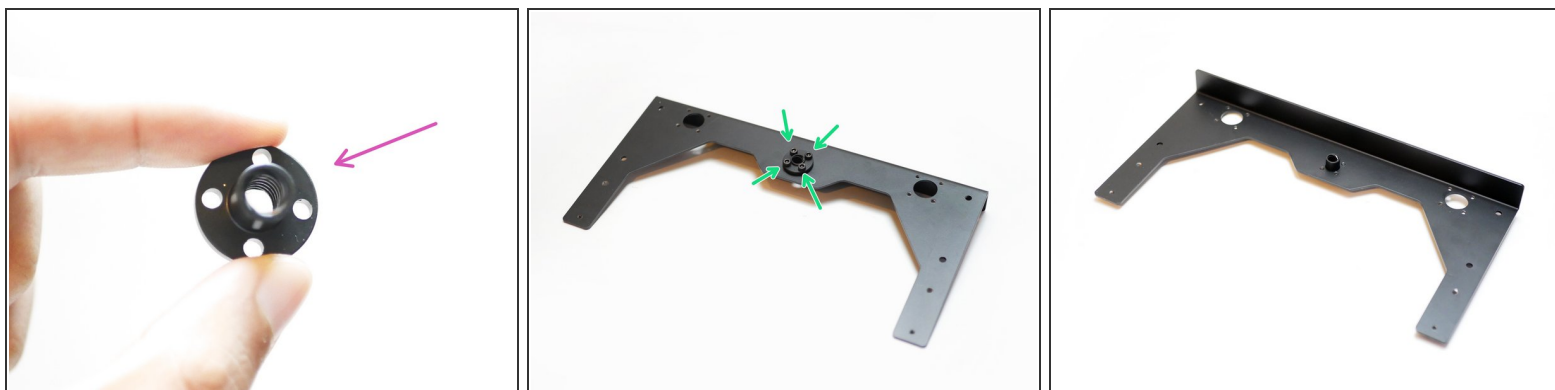
Makertech

Stage 04: Platform

Written By: Makertech 3D



Step 1 — Platform Panels - Lead Screw Nut



i Fix the lead screw nut onto the platform panel as shown.

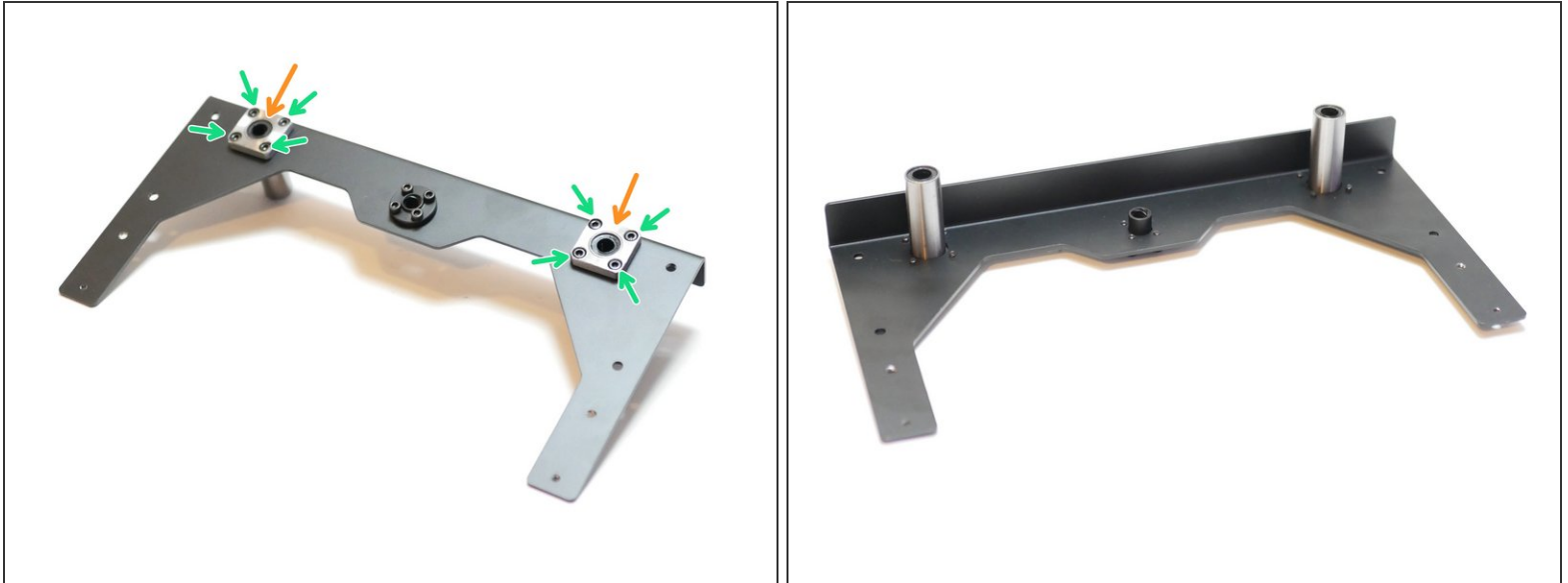
● Lead Screw Nut

● M3 x 6mm Cap



i Repeat for both panels


! Note the orientation of the nut in relation to the panel also.

Step 2 — Platform Panels - Linear Bearings



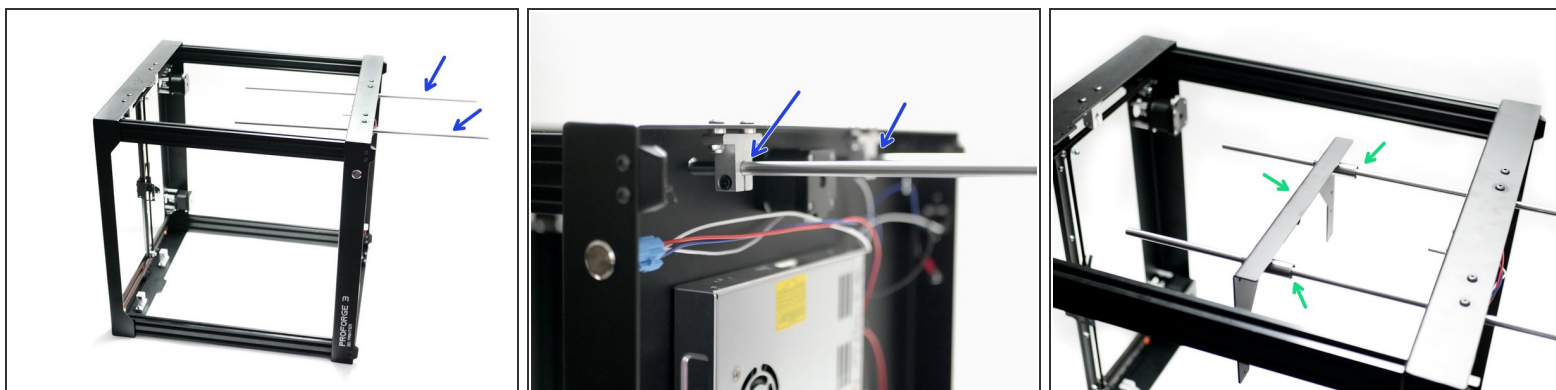
 Secure two LMK8LUU linear bearings onto the panels like shown.

-  LMK8LUU
-  M3 x 6mm Cap

 Repeat for both Panels

 Note the orientation of the bearings in relation to the panels also.

Step 3 — Z-Rods

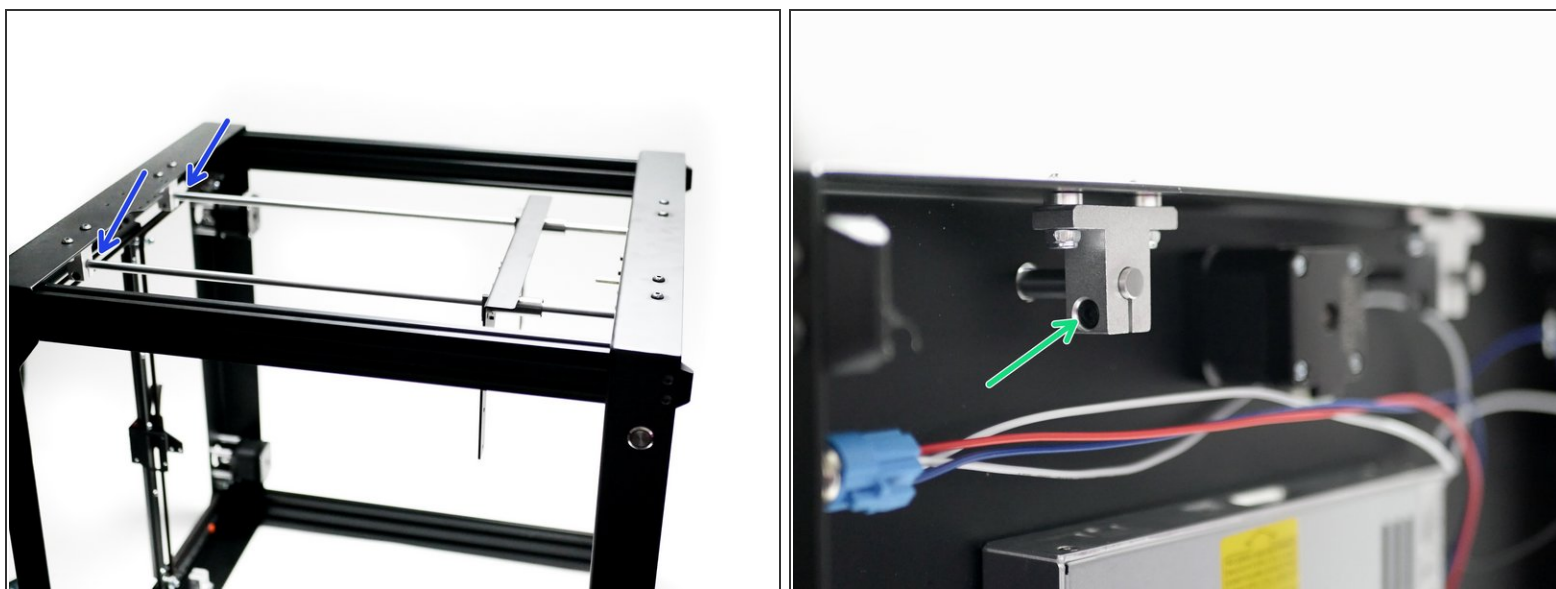


i Place the printer onto its side.

- Slide two z-rods in through the mounts on the base.
- Slide one of the platform panel assemblies onto the rods like shown.

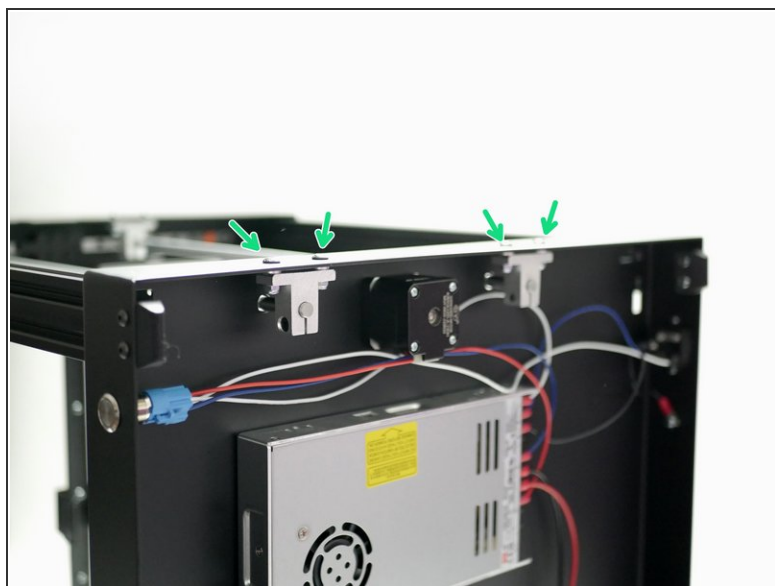
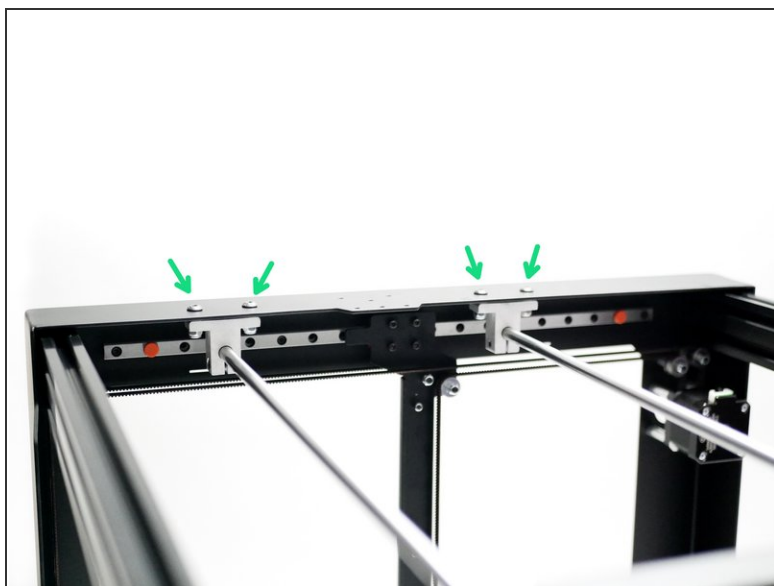
! The mounts themselves should at this stage only be fastened on loosely, as instructed in the base and top panel assembly notes.

Step 4 — Securing the Z-Rods



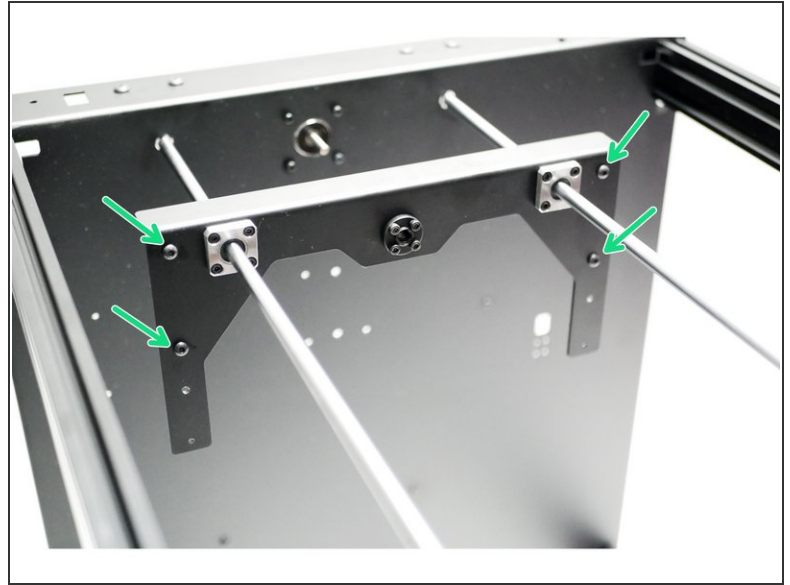
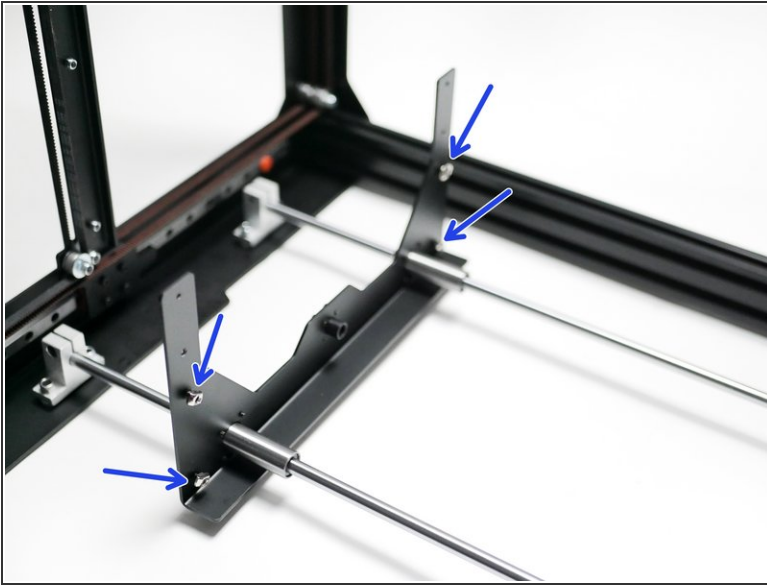
- Push the shafts all the way up into the brackets on the top panel.
- Secure the shafts onto the mounts by firmly tightening the M4 bolts on each bracket.

Step 5 — Securing the Brackets



- With the mounts now clamping down onto the rods, it is time to firmly secure the brackets to the panels.
- ⓘ Repeat this for the other side also.

Step 6 — T-Nuts



i Loosely fasten M4 x 6mm bolts and M4 t-nuts onto the four holes on the platform panels like shown.

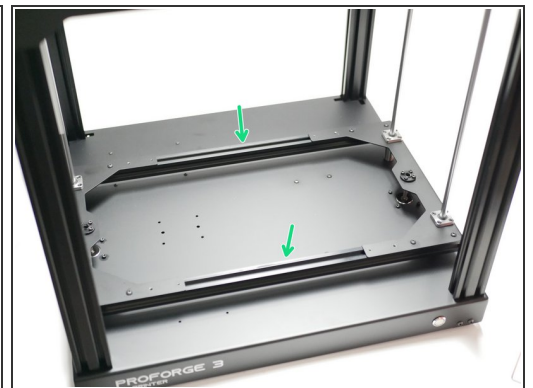
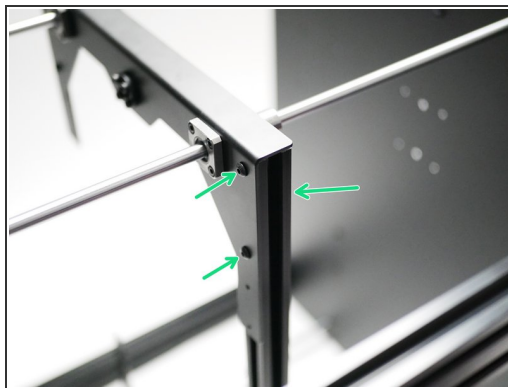
★ Note the orientation, the T-nuts should point towards the base.

● M4 x 6mm

● M4 T-Nut

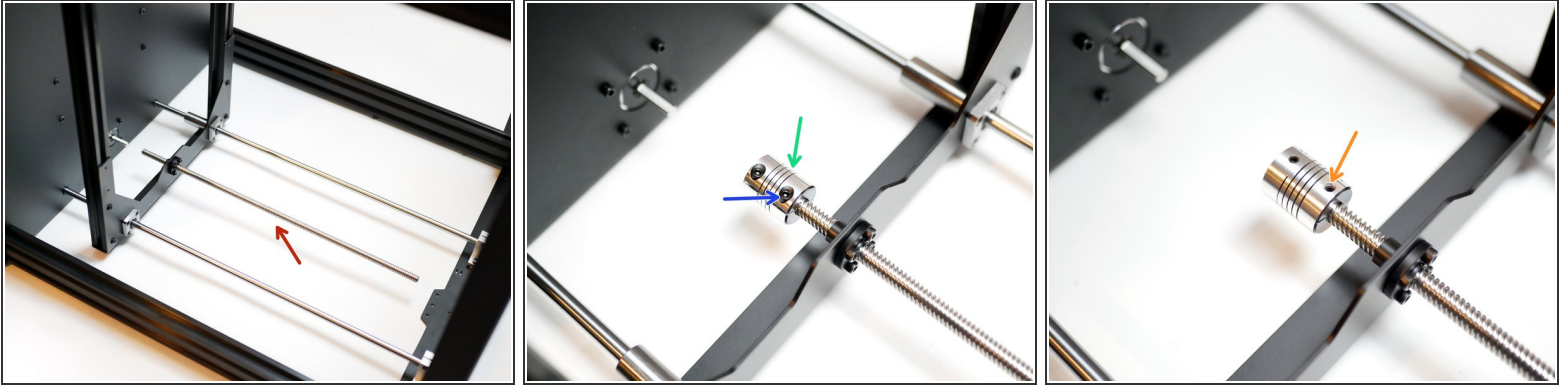
i Repeat for the other platform panel also.

Step 7 — 2020 Extrusions



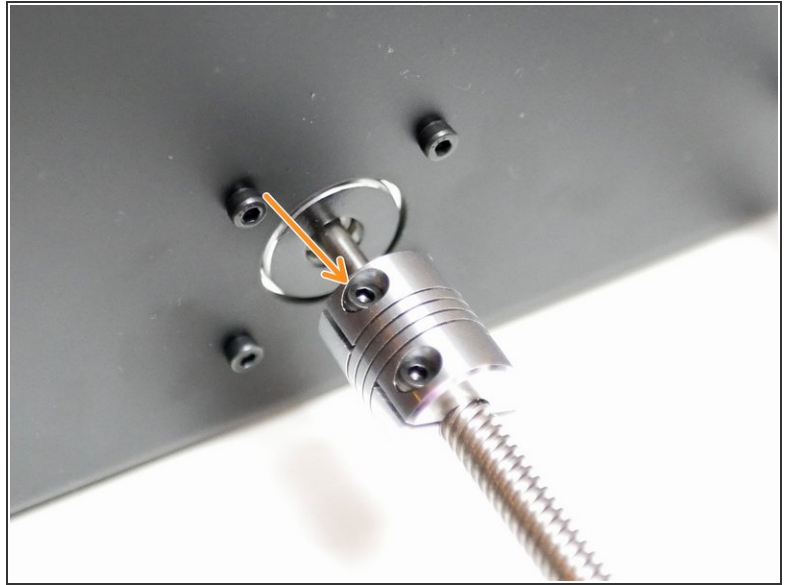
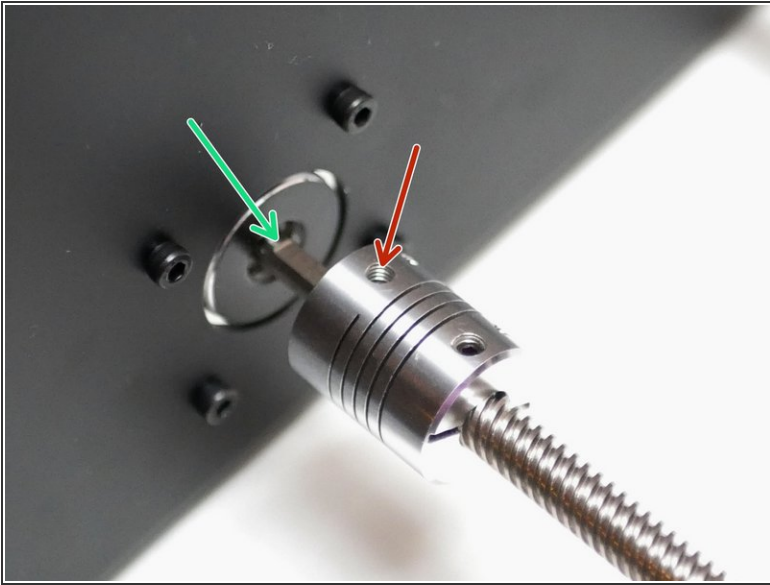
i Take the 2020 extrusions and secure them to the platform panels like shown.

Step 8 — Lead Screw



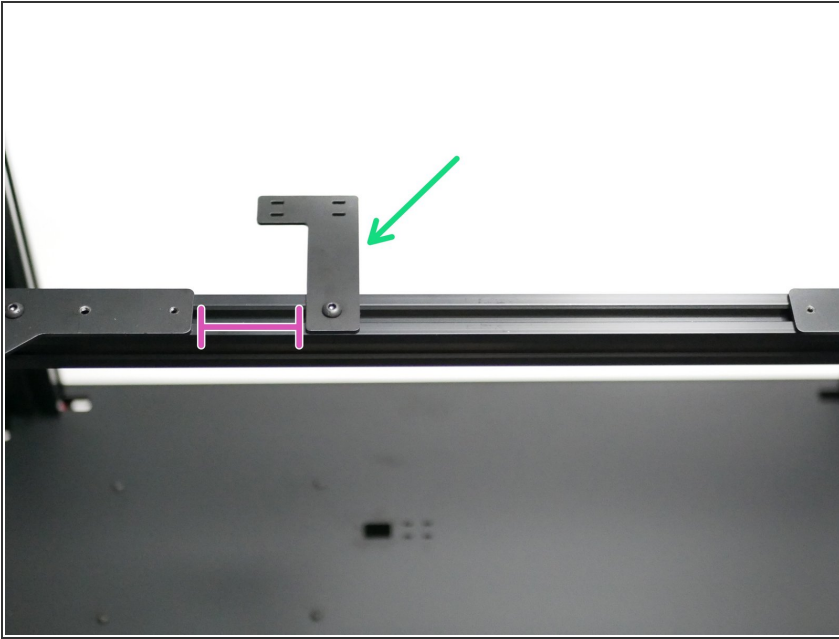
- Screw the lead screw into the lead screw nut.
- Take a coupling and push it all the way onto the leadscrew,
- Tighten this bolt to clamp the coupling in place on the lead screw.
- Finally, tighten the set screw on the coupling also.

Step 9 — Lead Screw Coupling



- ① Slide the coupling onto the z-motor shaft.
- ① Secure the set screw onto the flat side of the shaft.
 - Set screw
 - Flat side of motor shaft
 - Finally clamp the coupling in place by tightening this bolt.

Step 10 — Heated Bed Cable Relief Bracket



- Secure the cable relief bracket to the rear 2020 extrusion like shown with an M4 x 6mm bolt and M4 T-nut.
- Fix it approximately an inch from the left platform panel.

Step 11 — Proforge 3.5



⚠ If building the Proforge 3.5 complete [this stage](#) instead.