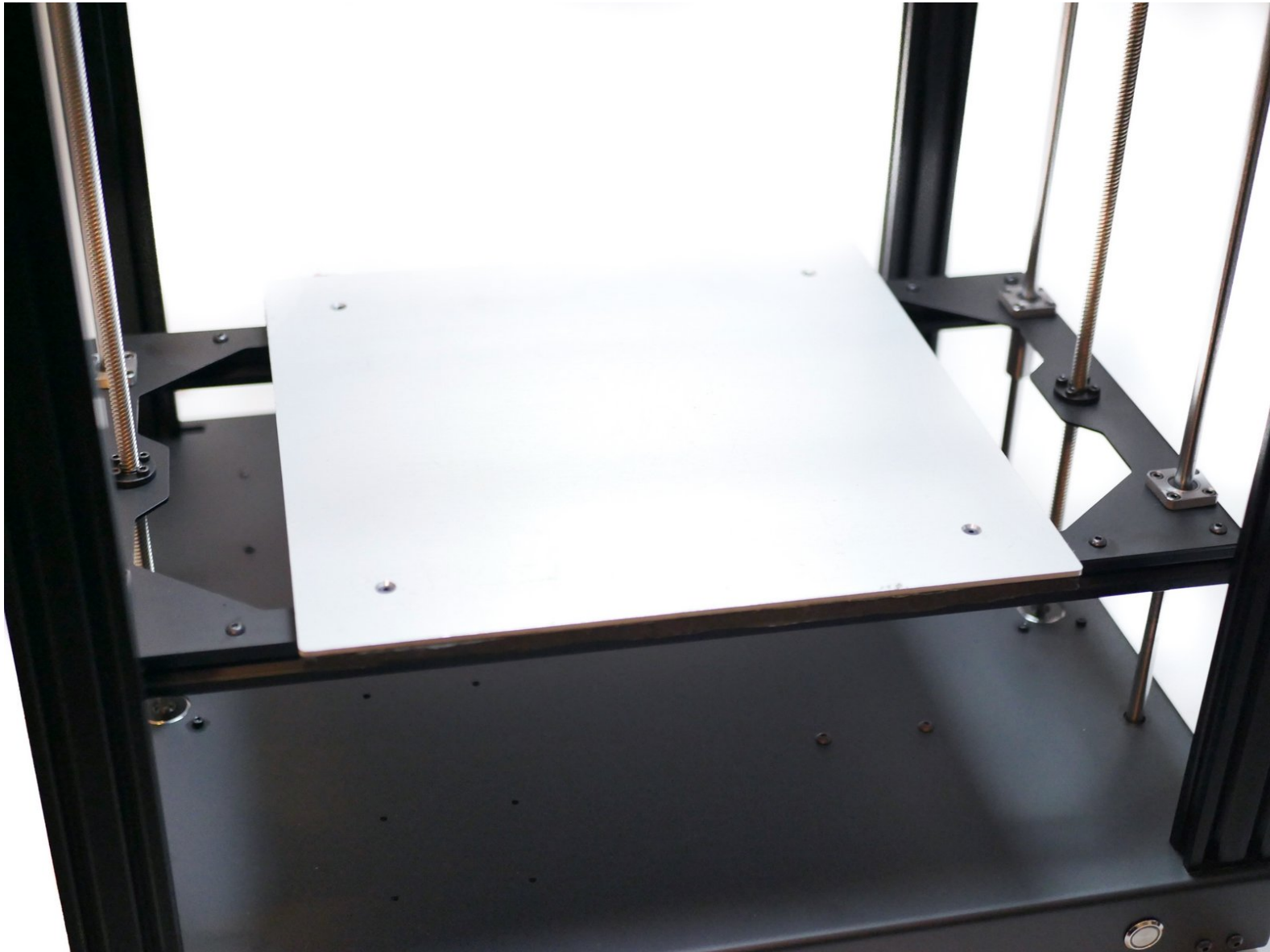


Makertech



Stage 05: Heated Bed (24V)

Written By: Makertech

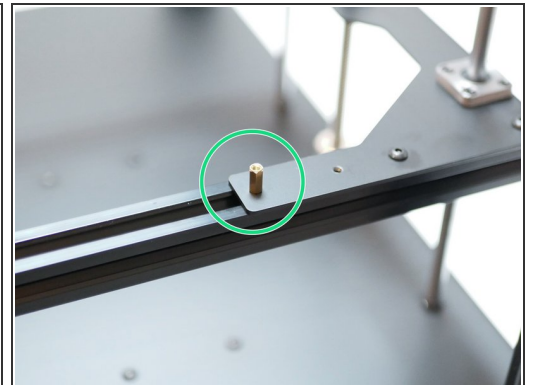
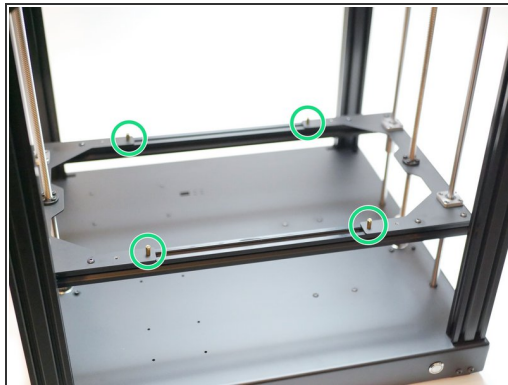



Step 1 — Heated Bed



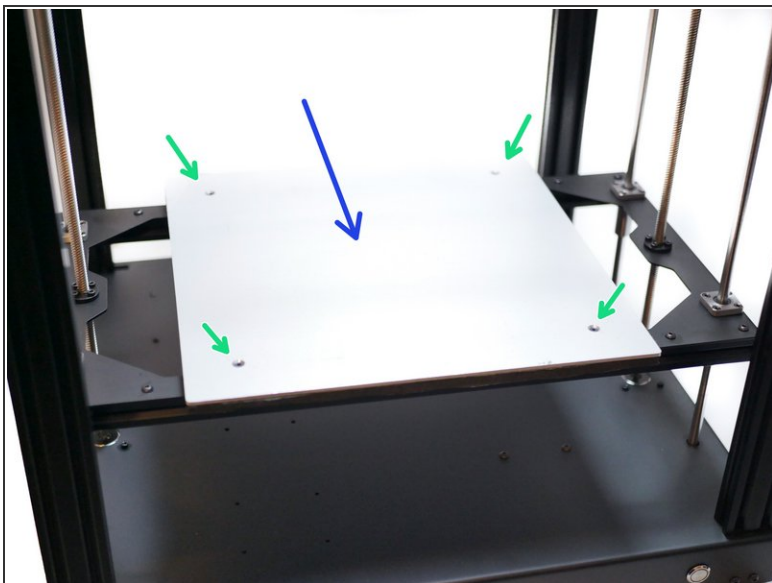
-  If you have the MIC-6 heated bed upgrade, then please follow [these](#) steps for stage 5 of the build.
-  If you have the default 24V heated bed, then please continue with this version of stage 5.


Step 2 — Brass Standoffs




-  Take the four M3 brass stand-offs and secure them onto the platform assembly as shown.

Step 3 — Mounting the Heated Bed



 Mount the heated bed onto the stand-offs that were installed in the previous step.

- M3 x 6mm Button


 Make sure that the cables are pointing to the rear of the printer.

- Remove the protective film from the platform's surface.

Step 4 — Magnetic Sheet



 With the heated bed mounted stick onto it's surface the magnetic sheet.

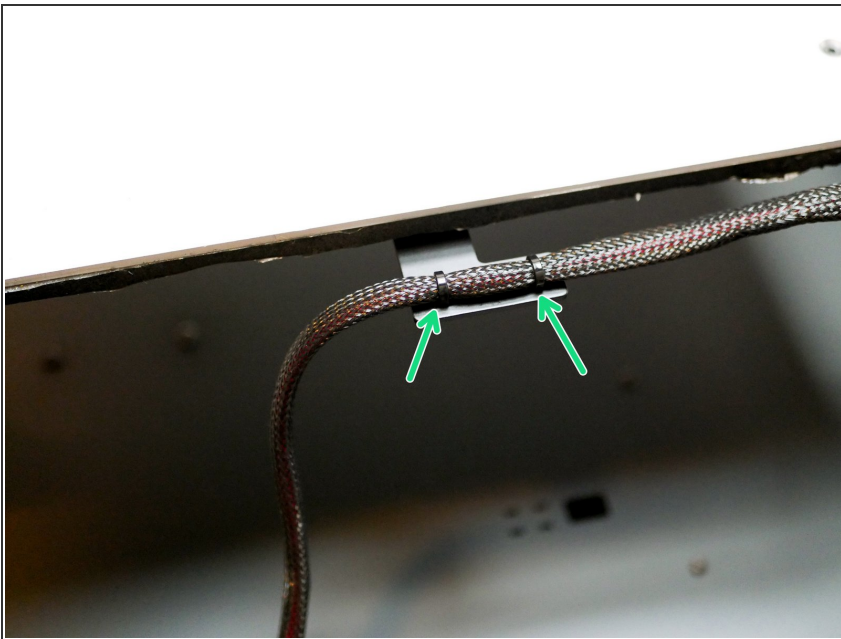
 (Images to be added)

Step 5 — Cable Slewing



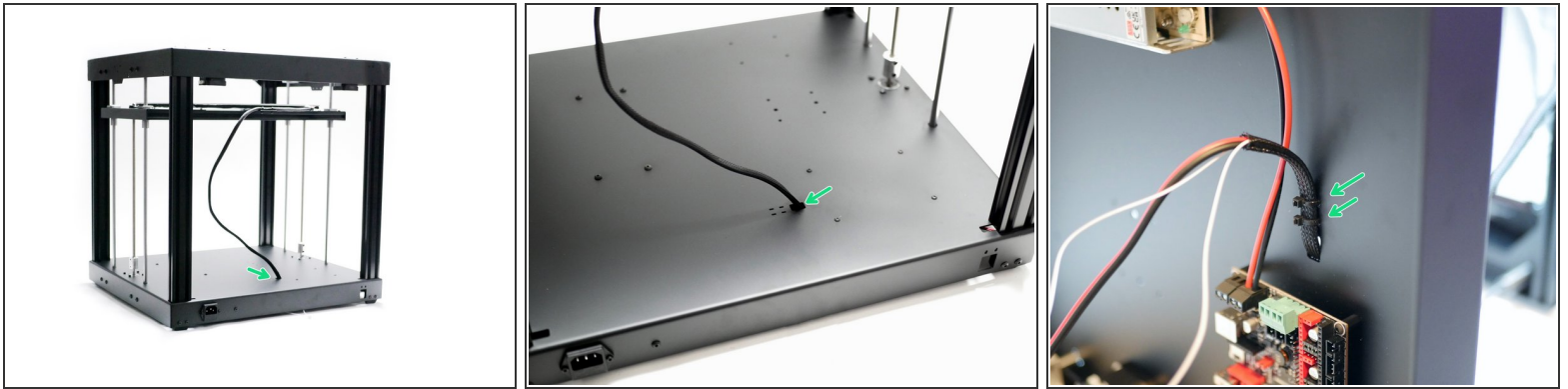
- ❗ Cut approximately 60CM of the braided cable sleeving. Use a lighter to melt the ends to prevent fraying.
- ❗ Slide the sleeving onto the heated bed cables.

Step 6 — Cable Relief



- Secure the cables to the cable relief bracket with two cable ties.

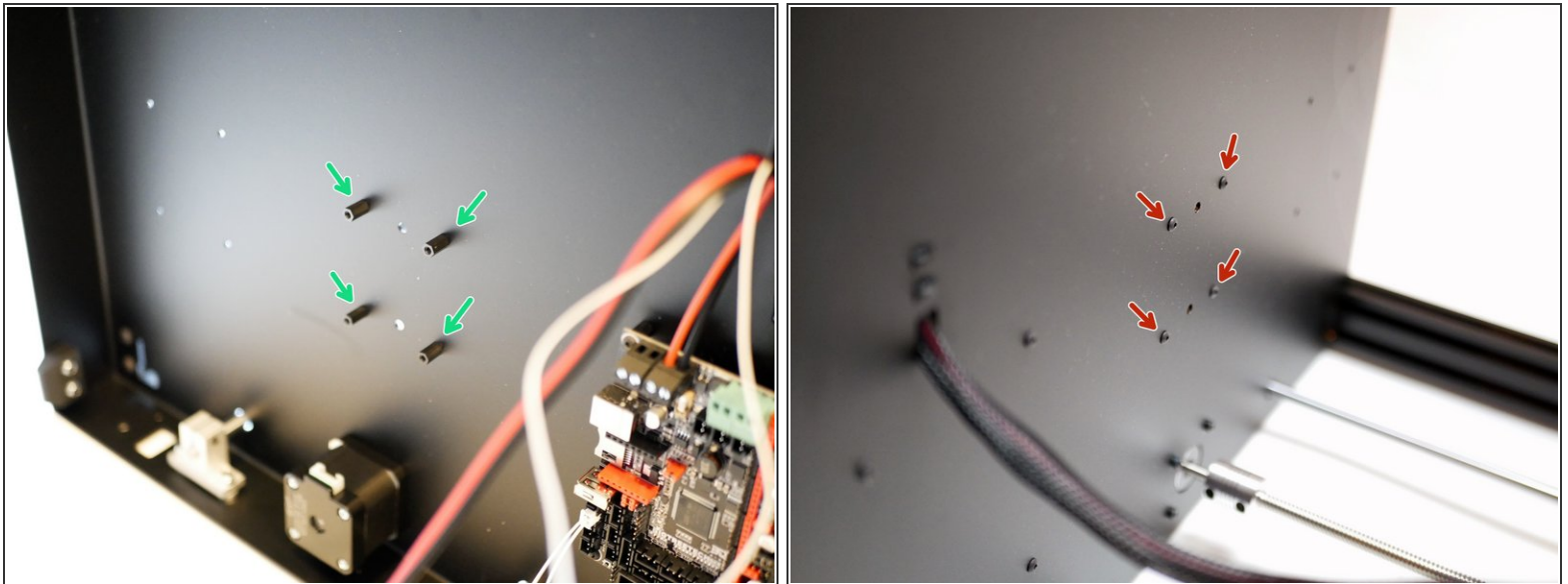
Step 7 — Cable Routing



i Raise the platform to the top.

- Feed the cables into the hole on the base and secure in place with two cable ties.

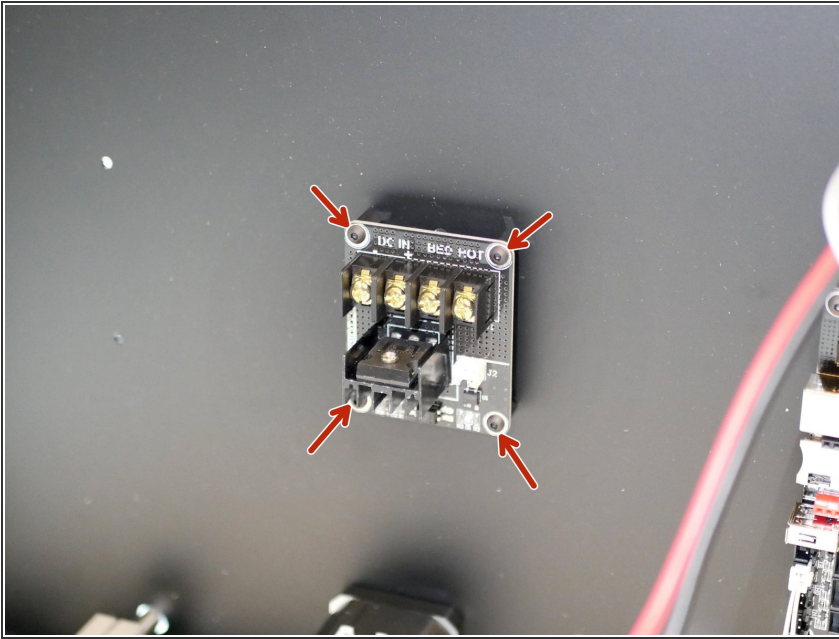
Step 8 — MOSFET Mounts



i Secure four M3 x 10mm standoffs to the base like shown.

- M3 x 10mm threaded spacer
- M3 x 6mm button

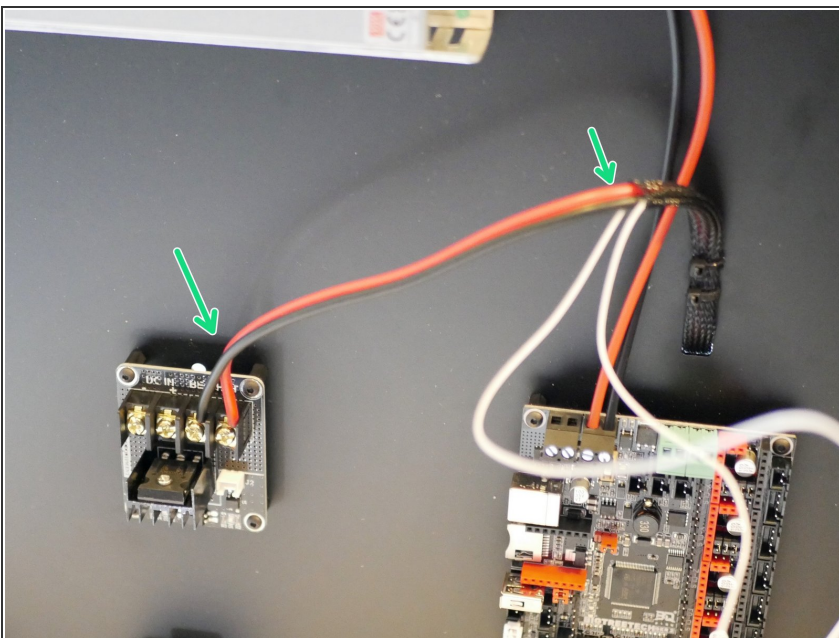
Step 9 — MOSFET



i Mount the MOSFET to the base.

- M3 x 6mm button

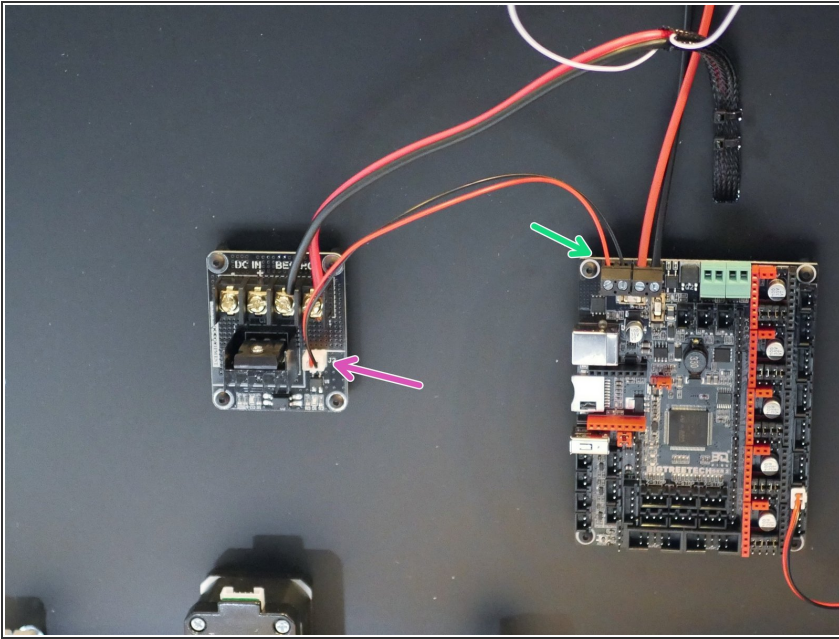
Step 10 — Heated Bed to MOSFET



- Secure the power cables from the heated bed onto the MOSFET as show.

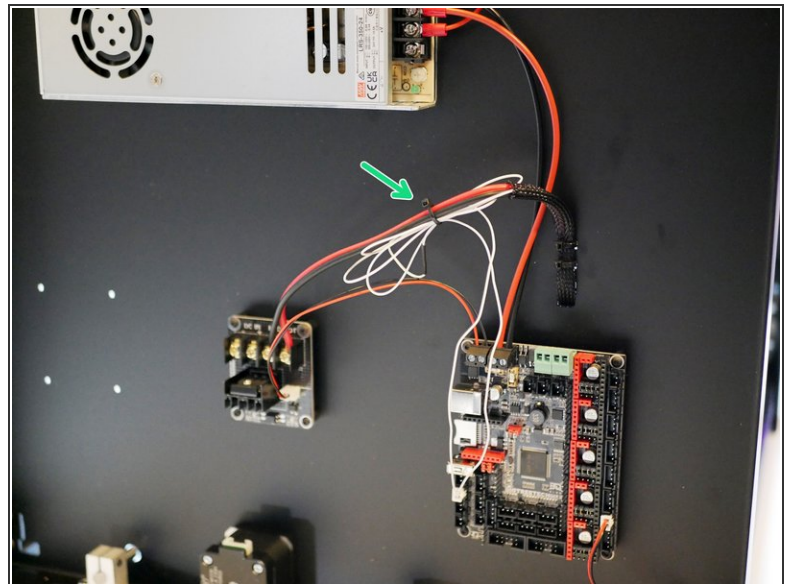
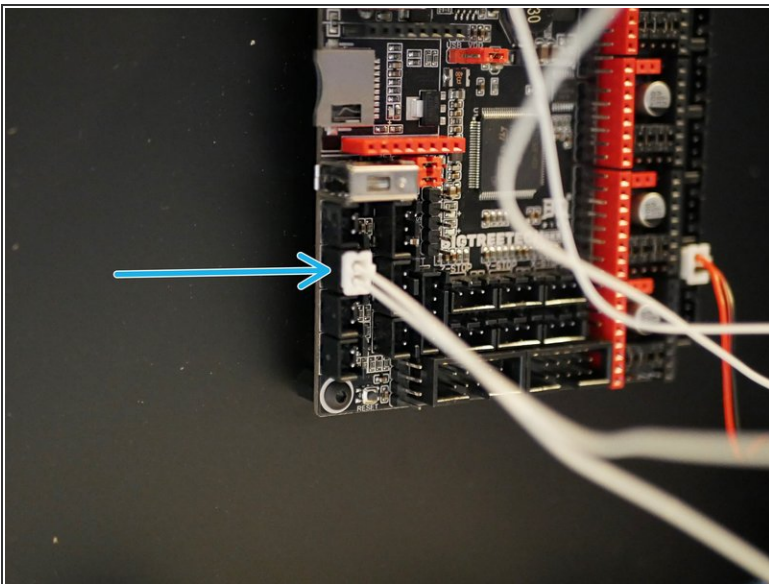
! Make sure that the cable orientation matches.

Step 11 — MOSFET Signal Cable



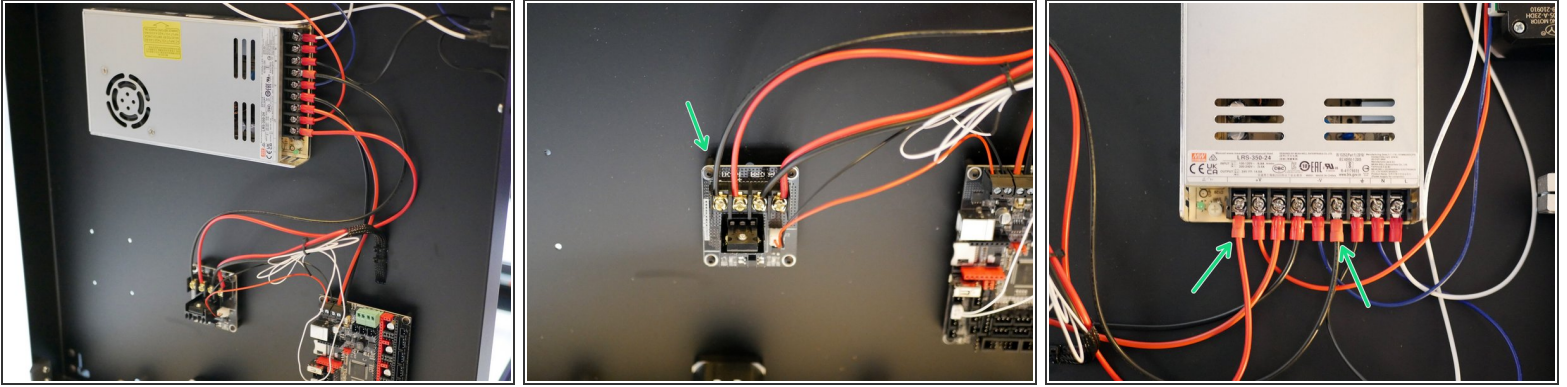
- Connect the signal cable to the heated bed terminals on the control board.
- Connect the other side to the MOSFET board.

Step 12 — Thermistor



- Connect the bed's thermistor to the board in the position shown.
- Use a cable tie to wrap any loose cable.

Step 13 — MOSFET Power



- Connect power cables from the power supply to the MOSFET.
- Red to positive.
- Black to negative.